

SPECIFICATIONS



ENGINE TIER 4 INTERIM

Make and model MITSUBISHI D04EG-TAA
 Engine Power (ISO 14396) 74 kW (99 hp)
 Maximum torque 372 Nm (1600 rpm)
 Type Water-cooled, direct injection type diesel engine
 with intercooler turbo-charger electric common-rail
 Displacement 3.3 l
 N. of cylinders 4
 Bore x stroke 94 x 120 mm
iNDr Integrated Noise&Dust Reduction Cooling System
Electronic engine rpm control, dial type
Auto-idling selector returns engine to minimum rpm when all
 controls are in neutral position
The engine complies with 97/68/EC standards stage 3B (Tier4 interim)



ELECTRICAL SYSTEM

Voltage / Alternator 24V / 50 A
 Starter motor 2.4 kW
 Maintenance-free batteries 2 x 12V / 160 Ah



TRANSMISSION

Type hydrostatic, two-speed, Automatic DownShift
 Travel motors axial piston type, double displacement
 Brakes automatic discs type
 Final drive oil bath, planetary reduction
 Gradeability 70% (35°)
 Travel speeds
 LC version low 0 - 3.4 km/h / high 0 - 5.6 km/h
 Logging version low 0 - 3 km/h / high 0 - 5.3 km/h
 Drawbar pull
 LC version 138 kN
 Logging version 156 kN



UNDERCARRIAGE

X-frame undercarriage design
 Reinforced track chain with sealed bushing

	LC	L*
Track rollers (each side)	7	7
Carrier rollers (each side)	2	2
Length of track on ground (mm)	3040	2990
Gauge (mm)	1990	2040
Shoes (mm)	500-600	800-900
	700	

Shoe type Tractor type triple grouser shoe
 No. for each side 46
 Height of grouser shoe 25 mm
 * Logging



HYDRAULIC SYSTEM

High capacity double pumps with electronic delivery adjustment.
 Variable displacement pistons pumps revert in neutral automatically to
 zero. Main Control Valve with Fail Safe Function and Anti drift valve.
 H.A.O.A. (Hydrotronic Active Operation Aid)
 E.S.S.C. (Engine Speed Sensing Control)
 D.O.C. (Dipperstick Optimized Control)
 Power Boost device
 New generation A.E.P. (Advanced Electronic Processor)

3 working Modes

H Mode - Heavy duty excavation work

SPEC SHEET

S Mode - Standard digging and loading work
 E Mode - Fuel Economy

Attachments Modes

Breaker (One-way hydraulic flow)
 Nibbler (Two-way hydraulic flow)
 Attachments flow and pressure setting from cab, 20 presets storage

Hydraulic pump

Max flow at rated engine speed 2 x 130 l/min
 Piloting circuit gear type pump max 20 l/min

Directional control valves

Type 8-spool valve

System Pressures

Boom, Arm&Bucket 34.3 MPa
 with Power Boost 37.8 MPa
 Travel 34.3 MPa
 Swing 28 MPa
 Pilot control Circuit 5 MPa



CAPACITIES

Engine oil 11.5 l
 Fuel tank 200 l
 Hydraulic system (incl. 85.2 l tank) 125.7 l
 Cooling system 13 l



SWING

Swing motor axial piston type
 Swing brake hydraulic brake
 Swing speed 0-11 rpm



CAB AND CONTROLS

Operator's cab

Structure Fully enclosed steel structure
 EVO operator cab evolution in comfort and safety compliant
 to ROPS (ISO 12117-2) and FOPS (ISO 10262 level II) standards
 Rear camera standard
 Monitor integrated multi-function control monitor
 with integrated rear view camera display

Operator's seat

Operator's seat Adjustable and reclining device

Operation

Travel Two hand levers or two foot pedals for
 forward and backward operations of each track independently
 Excavating and swing Two hand levers for four operations

Sound Level

External guaranteed sound level
 (EU Directive 2000/14/EC) LwA 93 dB(A)
 Operator cab sound pressure level (ISO 6396) LpA 65 dB(A)

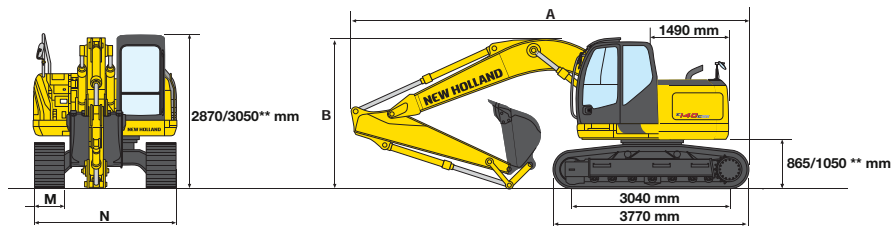


BUILT AROUND YOU

EI40CSR

DIMENSIONS - MONOBOOM

Boom length 4.70 m



** Logging

ARM		LC VERSION			L VERSION	
		2090	2380	2840	2090	2380
A - Overall length*	mm	7430	7500	7510	7490	7450
B - Boom height in transport position	mm	2760	2730	3120	2820	2830
Overall height	mm	2870	2870	3120	3050	3050

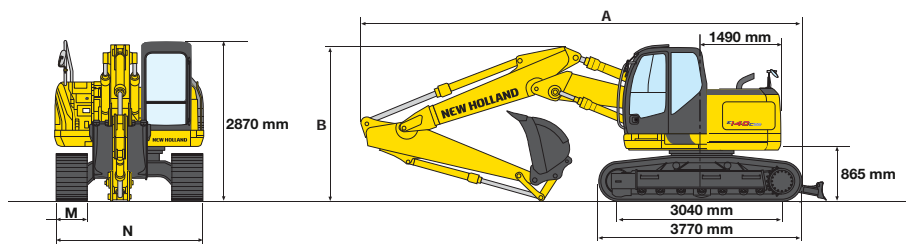
* without blade (optional)

OPERATING WEIGHT - MONOBOOM

		LC VERSION			L VERSION	
M - Shoe width	mm	500	600	700	800	900
N - Maximum width	mm	2490	2590	2690	2840	2940
Operating weight**	kg	14200	14400	14600	16400	16600
Ground pressure	bar	0.42	0.36	0.31	0.31	0.28
Blade width	mm	2490	2590	2690	-	-
Blade height	mm	580	580	580	-	-
Blade max lift	mm	510	510	510	-	-
Blade max dig	mm	590	590	590	-	-

** 2380 mm arm, without blade (optional) and additional counterweight (optional)

DIMENSIONS - TRIPLE ARTICULATION



LC VERSION

ARM		2090	2380
A - Overall length	mm	8020	7990
B - Boom height in transport position	mm	2830	2780
Overall height	mm	2870	2870

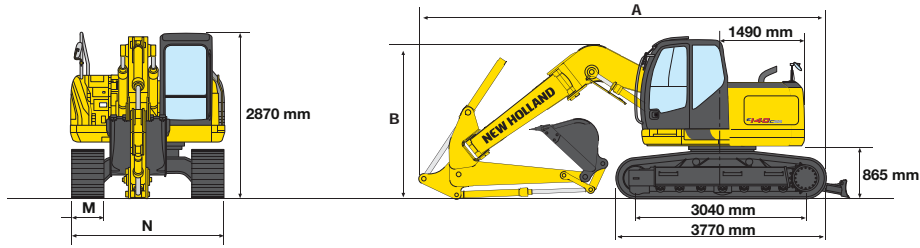
OPERATING WEIGHT - TRIPLE ARTICULATION

LC VERSION

M - Shoe width	mm	500	600	700
N - Maximum width	mm	2490	2590	2690
Operating weight**	kg	15000	15300	15500
Ground pressure	bar	0.45	0.38	0.33
Blade width	mm	2490	2590	2690
Blade height	mm	580	580	580
Blade max lift	mm	510	510	510
Blade max dig	mm	590	590	590

** 2380 mm arm, without blade (optional) and additional counterweight (optional)

DIMENSIONS - OFF SET BOOM



LCVERSION

ARM		2200	2500
A - Overall length	mm	7100	7130
Overall height	mm	2870	2870

OPERATING WEIGHT - OFF SET BOOM

LCVERSION

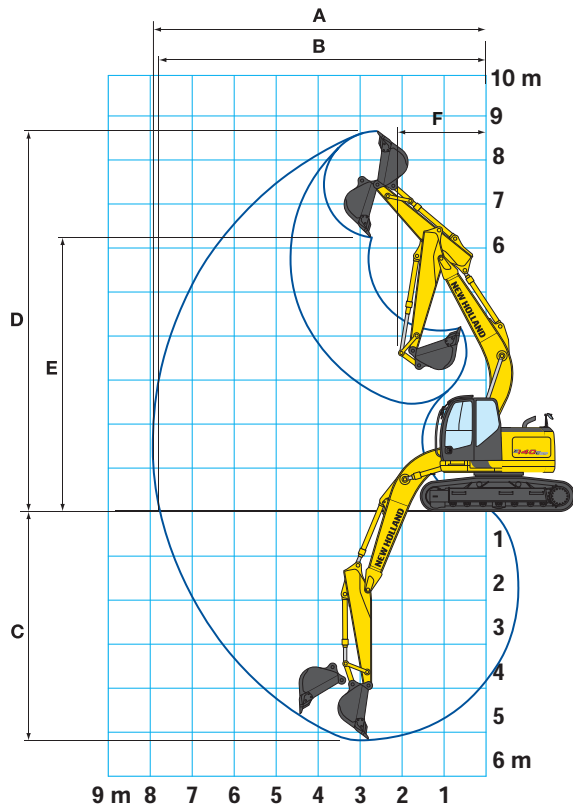
M - Shoe width	mm	500	600	700
N - Maximum width	mm	2490	2590	2690
Operating weight**	kg	14800	15000	15200
Ground pressure	bar	0.44	0.37	0.32
Blade width	mm	2490	2590	2690
Blade height	mm	580	580	580
Blade max lift	mm	510	510	510
Blade max dig	mm	590	590	590

** 2380 mm arm, without blade (optional) and additional counterweight (optional)

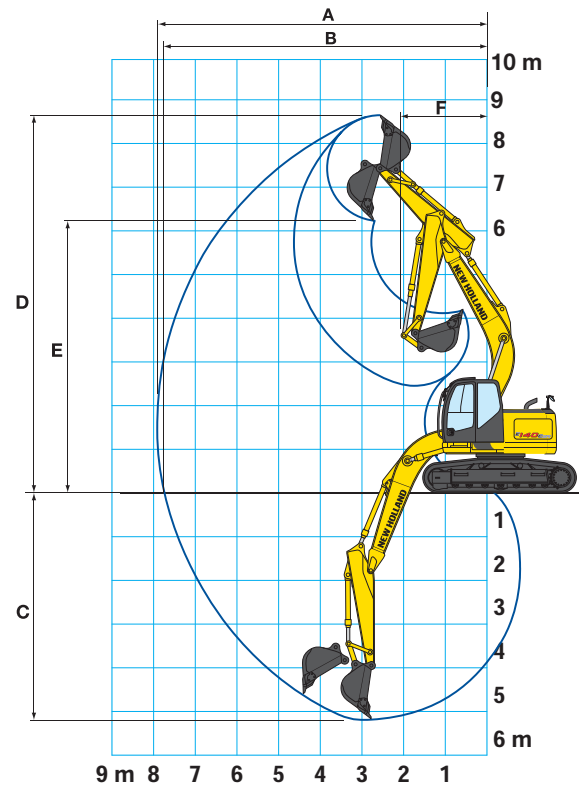
NOTE: Rear swing radius with additional (0.58 t) counterweight (optional) is 1600 mm

DIGGING PERFORMANCE

MONOBOOM



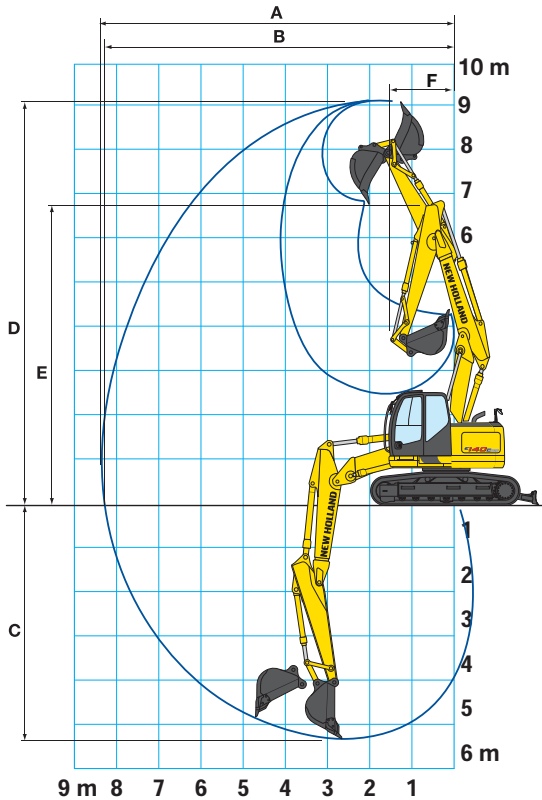
MONOBOOM LOGGING



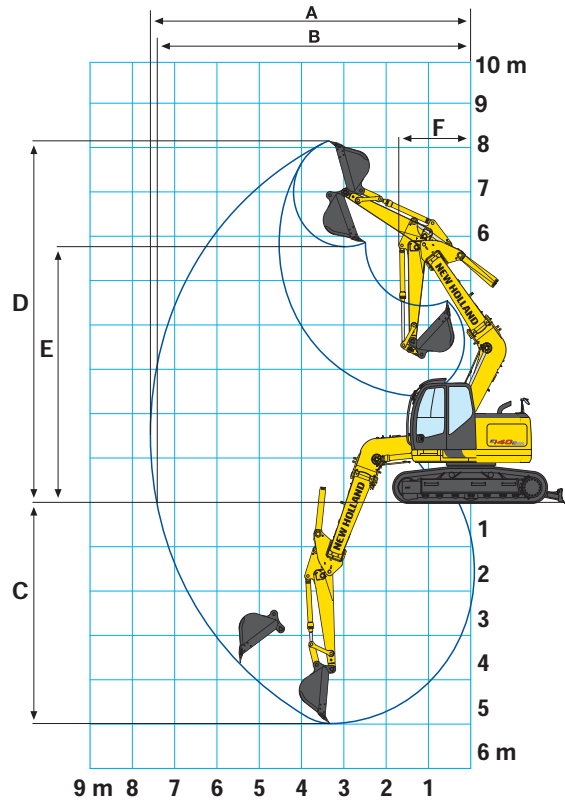
ARM		LCVERSION			LVERSION	
		2090	2380	2840	2090	2380
A - Max. digging reach	mm	8040	8340	8780	8040	8340
B - Max. digging reach at ground level	mm	7890	8190	8640	7850	8160
C - Max. digging depth	mm	5230	5520	5980	5040	5330
D - Max. digging height	mm	8910	9190	9550	9100	9370
E - Max. dumping clearance	mm	6470	6470	7110	6660	6930
F - Min. swing radius	mm	2070	2000	2400	2070	2000

DIGGING PERFORMANCE

TRIPLE ARTICULATION



OFF SET BOOM



ARM		TRIPLE ART.		OFF SET BOOM	
		2090	2380	2200	2500
A - Max. digging reach	mm	8510	8800	7570	7830
B - Max. digging reach at ground level	mm	8360	8660	7410	7680
C - Max. digging depth	mm	5410	5710	4990	5290
D - Max. digging height	mm	9280	9550	8150	8320
E - Max. dumping clearance	mm	6840	7100	5770	5930
F - Min. swing radius	mm	2140	2040	1700	1760

BREAKOUT FORCE

ARM		MONOBOOM			LOGGING		TRIPLE ART.		OFF SET BOOM	
		2090	2380	2840	2090	2380	2090	2380	2200	2500
Bucket	daN	9010	9010	9010	9010	9010	9010	9010	8750	8750
Dipperstick	daN	7190	6440	5840	6980	6440	7190	6400	6210	5740

AT YOUR OWN DEALERSHIP

The information contained in this brochure is intended to be of general nature only. The NEW HOLLAND KOBELCO CONSTRUCTION MACHINERY S.p.A. company may at any time and from time to time, for technical or other necessary reasons, modify any of the details or specifications of the product described in this brochure. Illustrations do not necessarily show products in standard conditions. The dimensions, weights and capacities shown herein, as well as any conversion data used, are approximate only and are subject to variations within normal manufacturing techniques.

Published by NEW HOLLAND KOBELCO CONSTRUCTION MACHINERY S.p.A.
Printed in Italy - MediaCross Firenze - Cod 30657GB - Printed 03/11

Printed on recycled paper
CoC-FSC 000010 CQ Mixed sources



ELEMENTAL
CHLORINE
FREE
GUARANTEED



www.newholland.com

