

E195C

SPEC SHEET



E195C

ENGINE POWER	96 kW - 129 hp
MAX OPERATING WEIGHT	20400 Kg
BUCKET CAPACITY	0.24 m ³ - 0.90 m ³



BUILT AROUND YOU

E195C

MORE PRODUCTIVITY

Tier 4 interim engine and SCR technology, which optimizes combustion, deliver more power. The hydraulic system maximizes performance according to the job at hand. High efficiency hydraulics and new joysticks with optional Hydraulic Proportional Controls (HPC) result in smooth operation, outstanding control and fast cycles. The new E195C works faster and with more power, boosting productivity on site by up to 10%.



BEST FUEL ECONOMY

High efficiency intelligent hydraulics ensure 100% pump utilization in all applications. The hydraulic design minimizes friction losses and pressure drops. New ECO working mode optimizes fuel consumption while maintaining top performance. Together with New Holland's SCR technology, which allows the engine to operate at maximum efficiency, these features cut fuel consumption by up to 10% compared to previous model, reducing operating costs.

EVOLUTION IN COMFORT AND SAFETY

The EVO cab, with full size right window and rear-view camera, provides exceptional all-round visibility. Cab dampers and soundproofing result in remarkably low noise and vibration levels. Operators can work confidently in the ROPS/FOPS compliant cab.



BUILT IN RELIABILITY AND DURABILITY

With a proven heavy duty design, New Holland excavators continue to provide the ultimate reliability and durability that customers expect. Fast maintenance with all service points accessible at ground level. Built to provide maximum uptime for the customer.

E195C

SPECIFICATIONS



ENGINE TIER 4 INTERIM

Make and model FPT F4HFE413H*A001
Engine Power (ISO 14396/ECE R120).....96 kW/129 hp (2200 rpm)
Maximum torque.....496 Nm (1600 rpm)
Type ... Water-cooled, direct injection type diesel engine with intercooler turbo-charger electric common-rail, Selective Catalytic Reduction (SCR) exhaust after treatment with AdBlue
Displacement.....4.5 l
N. of cylinders.....4
Bore x stroke.....104 x 132 mm
Remote engine oil filter for easy replacement
Electronic engine rpm control, dial type
Auto-Idling selector returns engine to minimum rpm when all controls are in neutral position
-25° outside temperature start as standard equipment
The engine complies with 97/68/EC standards stage 3B



ELECTRICAL SYSTEM

Voltage / Alternator 24V / 70 A
Starter motor 4 kW
Maintenance-free batteries 2 x 12V / 160 Ah



TRANSMISSION

Typehydrostatic, two-speed, Automatic DownShift
Travel motors axial piston type, double displacement
Brakes..... automatic discs type
Final drive..... oil bath, planetary reduction
Gradeability 70%
Travel speeds low 0 - 2.9 km/h / high 0 - 4.9 km/h
Drawbar pull 225 kN



UNDERCARRIAGE

X-frame undercarriage design
Reinforced track HD chain with sealed bushing

	E195C EL	E195C LC
Track rollers (each side)	8	8
Carrier rollers (each side)	2	2
Length of track on ground (mm)	3660	3660
Gauge (mm)	1990	2390
Shoes (mm)	500-600-700	600-700 800-900

Shoe type Tractor type triple grouser shoe
No. for each side.....49
Height of grouser shoe.....26 mm



HYDRAULIC SYSTEM

High capacity double pumps with electronic delivery adjustment.
Variable displacement pistons pumps revert in neutral automatically to zero. Main Control Valve with Fail Safe Function and Anti drift valve.
H.A.O.A. (Hydrotronic Active Operation Aid)
E.S.S.C. (Engine Speed Sensing Control)
D.O.C. (Dipper Optimised Control)
C.P.B. (Continuous Power Boost)
New generation A.E.P. (Advanced Electronic Processor)

3 working Modes

H Mode - Heavy duty excavation work
S Mode - Standard digging and loading work
E Mode - Fuel Economy

Attachments Modes

Breaker (One-way hydraulic flow)
Nibbler (Two-way hydraulic flow)
Attachments flow and pressure setting from cab, 20 presets storage

Hydraulic pump

Max flow at rated engine speed.....2 x 176 l/min
Piloting circuit gear type pump..... max 22 l/min

Directional control valves

Type 8-spool valve

System Pressures

Boom, Arm&Bucket34.3 MPa
with Power Boost37.8 MPa
Travel34.3 MPa
Swing28 MPa
Pilot control Circuit..... 5 MPa



CAPACITIES

Engine oil 12.1 l
Fuel tank 286 l
Hydraulic system (included 154 l tank) 195 l
Cooling system 22 l
AdBlue tank (Urea) 79 l



SWING

Swing motor axial piston type
Swing brake hydraulic brake
Swing speed 0-11.5 rpm



CAB AND CONTROLS

Operator's cab

Structure Fully enclosed steel structure
EVO operator cabine evolution in comfort and safety compliant to ROPS (ISO 12117-2) and FOPS (ISO 10262 level II) standards
Rear camera standard
Monitor integrated multi-function control monitor with integrated rear view camera display

Operator's seat

Operator's seat Adjustable and reclining device

Operation

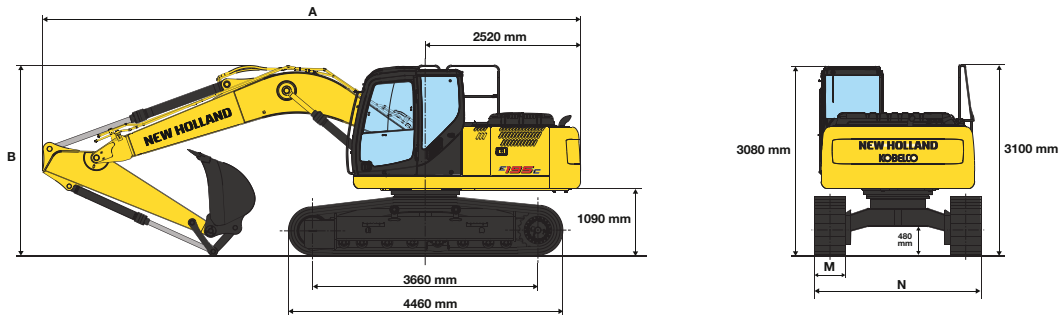
Travel Two hand levers or two foot pedals for forward and backward operations of each track independently
Excavating and swing Two hand levers for four operations

Sound Level

External guaranteed sound level
(EU Directive 2000/14/EC) LwA 101 dB(A)
Operator cab sound pressure level (ISO 6396) LpA 71 dB(A)

DIMENSIONS - MONOBOOM

Boom length 5.2 m



EL / LCVERSION

ARM		2200	2600	3100
A - Overall length	mm	8730	8680	8680
B - Boom height in transport position	mm	3090	2950	3030
Overall height	mm	3100	3100	3100

OPERATING WEIGHT - MONOBOOM

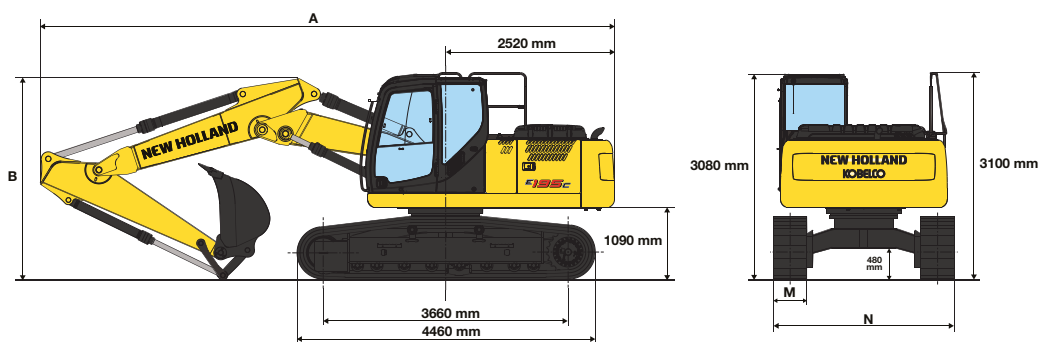
		EL VERSION			LC VERSION			
M - Shoe width	mm	500	600	700	600	700	800	900
N - Maximum width	mm	2490	2590	2690	2800	2900	3000	3100

2200 ARM		EL VERSION			LC VERSION			
Operating weight	kg	18690	18940	19210	18980	19250	19520	19810
Ground pressure	bar	0.50	0.42	0.37	0.42	0.37	0.33	0.3

2600 ARM		EL VERSION			LC VERSION			
Operating weight	kg	18720	18980	19250	19010	19290	19550	19840
Ground pressure	bar	0.50	0.41	0.37	0.42	0.37	0.33	0.30

3100 ARM		EL VERSION			LC VERSION			
Operating weight	kg	18820	19070	19340	19110	19380	19640	19930
Ground pressure	bar	0.50	0.41	0.37	0.43	0.37	0.33	0.30

DIMENSIONS - TRIPLE ARTICULATION



EL / LCVERSION

ARM		2200	2600	3100
A - Overall length	mm	8580	8530	8530
B - Boom height in transport position	mm	3020	2890	2990
Overall height	mm	3100	3100	3100

OPERATING WEIGHT - TRIPLE ARTICULATION

		EL VERSION			LC VERSION			
M - Shoe width	mm	500	600	700	600	700	800	900
N - Maximum width	mm	2490	2590	2690	2800	2900	3000	3100

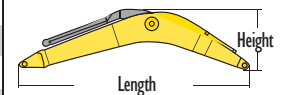
2200 ARM		EL VERSION			LC VERSION			
Operating weight	kg	19150	19400	19670	19440	19710	19980	20270
Ground pressure	bar	0.51	0.43	0.38	0.43	0.38	0.33	0.30

2600 ARM		EL VERSION			LC VERSION			
Operating weight	kg	19190	19440	19710	19480	19750	20020	20310
Ground pressure	bar	0.51	0.41	0.38	0.44	0.38	0.34	0.30

3100 ARM		EL VERSION			LC VERSION			
Operating weight	kg	19280	19530	19800	19570	19840	20110	20400
Ground pressure	bar	0.52	0.41	0.38	0.44	0.38	0.34	0.30

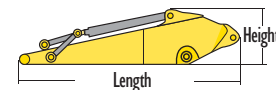
COMPONENT WEIGHTS & DIMENSIONS (mm)

BOOM		MONO BOOM 5.2 m	TRIPLE ART.	
			ARM MAIN 2.288 m	ARM SEC. 2.511 m
Length	m	5.390	2.860	3.580
Height	m	1.5 m	0.570	0.820
Width	m	0.620	0.620	0.430
Weight	kg	1290 kg	800 kg	860 kg



MONOBOOM - TRIPLE ARTICULATION EL / LC VERSION

ARM		2200	2600	3100
Length	m	3.120	3.510	4.000
Height	m	0.800	0.740	0.820
Width	m	0.310	0.450	0.450
Weight	kg	630	680	750



Counterweight	kg	3650
---------------	----	------

BUCKETS

MONOBOOM / TRIPLE ARTICULATION

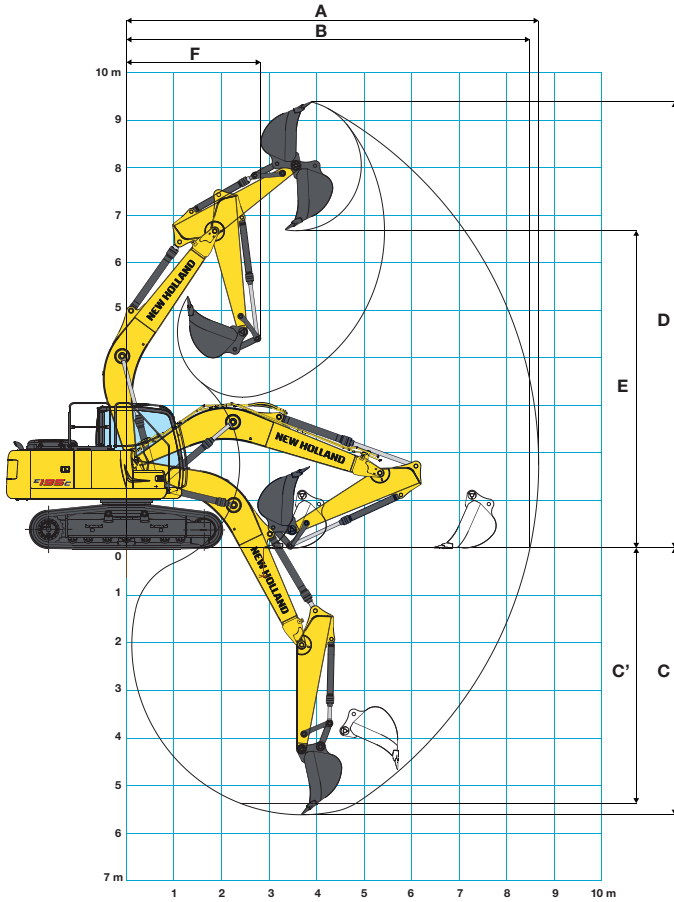
BUCKETS			E195C EL			E195C LC		
Width (ISO 7451)	Capacity	Weight	Arm mm			Arm mm		
	m ³		kg	2200	2600	3100	2200	2600
500	0.24	375						
780	0.43	475						
880	0.51	510						
1030	0.63	560						
1230	0.80	610						
1330	0.90	665						

- General digging work (specific weight of material < 1.8 t/m³)
- Slightly heavy digging work (specific weight of material < 1.5 t/m³)
- Loading work (specific weight of material < 1.2 t/m³)

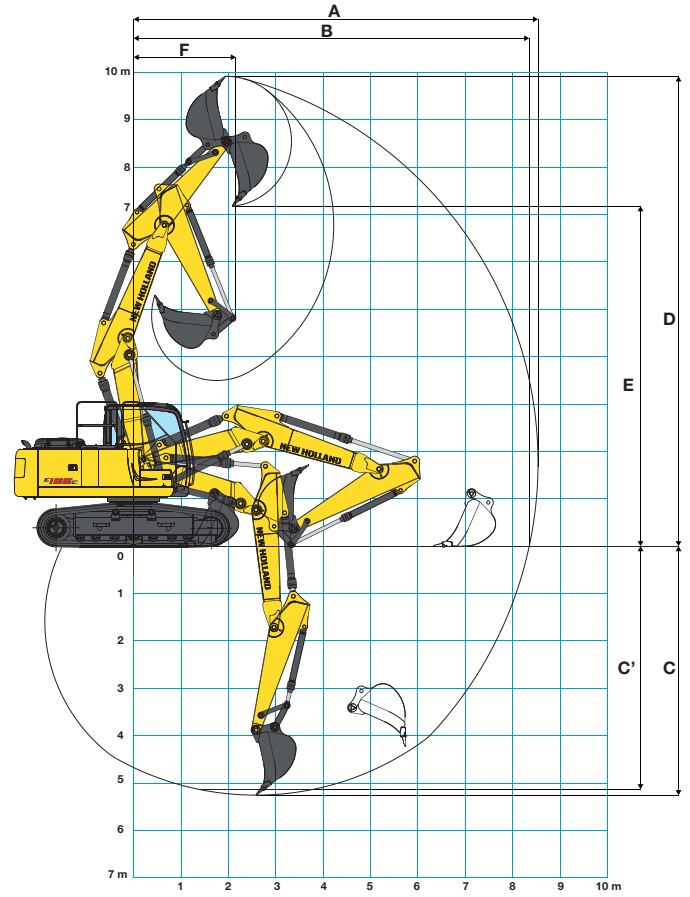
E195C

DIGGING PERFORMANCE

MONOBOOM



TRIPLE ARTICULATION



ARM	MONOBOOM			TRIPLE ARTICULATION			
	2200	2600	3100	2200	2600	3100	
A - Max. digging reach	mm	8680	9030	9520	8540	8890	9390
B - Max. digging reach at ground level	mm	8490	8850	9350	8350	8710	9220
C - Max. digging depth	mm	5600	6000	6500	5240	5630	10670
C' - 2,4 mt level digging depth	mm	5360	5780	6320	5120	5510	6030
D - Max. digging height	mm	9400	9600	9980	9930	10220	10670
E - Max. dumping clearance	mm	6690	6890	7270	7190	7470	7930
F - Min. swing radius	mm	2830	2530	2560	2160	1960	2060

BREAKOUT FORCE

ARM	MONOBOOM / TRIPLE ARTICULATION			
	2200	2600	3100	
Bucket	daN	12050	12050	12050
Arm	daN	10900	9200	7750

WITH "POWER BOOST" ON

ARM	MONOBOOM / TRIPLE ARTICULATION			
	2200	2600	3100	
Bucket	daN	13100	13100	13100
Arm	daN	11900	10050	8450

EI95C

LIFTING CAPACITY - EL VERSION

MONO BOOM - DIPPERSTICK 2200 mm

HEIGHT	RADIUS OF LOAD												REACH m
	1.5 m		3.0 m		4.5 m		6.0 m		7.5 m		AT MAX REACH		
	FRONT	SIDE	FRONT	SIDE	FRONT	SIDE	FRONT	SIDE	FRONT	SIDE	FRONT	SIDE	
+9.0 m													
+7.5 m					4.6*	4.6*					3.7*	3.7*	4.99
+6.0 m					4.5*	4.5*	4.3*	4.0			3.3*	3.3*	6.33
+4.5 m					5.1*	5.1*	4.4*	3.9			3.2*	3.0	7.12
+3.0 m					6.1*	5.5	4.8*	3.7	3.4*	2.7	3.3*	2.7	7.52
+1.5 m					7.0*	5.1	5.2*	3.5	4.3*	2.6	3.5*	2.6	7.62
0 m					7.3*	4.9	5.4*	3.4			3.9*	2.6	7.40
-1.5 m	6.1*	6.1*	9.9*	8.8	7.0*	4.9	5.2*	3.4			4.3*	2.9	6.86
-3.0 m	10.8*	10.8*	8.1*	8.1*	5.9*	5.0					4.2*	3.6	5.88
-4.5 m											3.4*	3.4*	4.18

TRIPLE ARTICULATION - DIPPERSTICK 2200 mm

HEIGHT	RADIUS OF LOAD												REACH m		
	1.5 m		3.0 m		4.5 m		6.0 m		7.5 m		AT MAX REACH				
	FRONT	SIDE	FRONT	SIDE	FRONT	SIDE	FRONT	SIDE	FRONT	SIDE	FRONT	SIDE			
+9.0 m															
+7.5 m					6.4*	6.4*							3.8*	3.8*	4.77
+6.0 m					6.2*	6.2*	4.3*	4.3*					3.3*	3.3*	6.16
+4.5 m					6.5*	6.5*	4.1*	4.1*	4.3*	3.8			3.2*	3.1	6.97
+3.0 m	12.2*	12.2*	6.3*	6.3*	6.3*	6.3*	4.3*	4.3*	4.6*	3.7			3.3*	2.7	7.39
+1.5 m			8.8*	8.8*	5.3*	5.1	5.0*	3.5					3.5*	2.6	7.48
0 m	7.7*	7.7*	9.0*	8.7	7.0*	4.9	5.1*	3.4					3.9*	2.7	7.26
-1.5 m	7.7*	7.7*	7.1*	7.1*	5.7*	4.9	4.1*	3.4					3.5*	3.0	6.70
-3.0 m	10.2*	10.2*	5.0*	5.0*	3.5*	3.5*							2.6*	2.6*	5.70
-4.5 m															

MONO BOOM - DIPPERSTICK 2600 mm

HEIGHT	RADIUS OF LOAD												REACH m
	1.5 m		3.0 m		4.5 m		6.0 m		7.5 m		AT MAX REACH		
	FRONT	SIDE	FRONT	SIDE	FRONT	SIDE	FRONT	SIDE	FRONT	SIDE	FRONT	SIDE	
+9.0 m												
+7.5 m											2.5*	2.5*	5.51
+6.0 m							3.9*	3.9*			2.3*	2.3*	6.75
+4.5 m					4.7*	4.7*	4.2*	3.9			2.2*	2.2*	7.49
+3.0 m			8.6*	8.6*	5.8*	5.6	4.6*	3.7	3.7*	2.7	2.3*	2.3*	7.88
+1.5 m			6.5*	6.5*	6.8*	5.2	5.1*	3.5	4.2*	2.6	2.4*	2.4	7.96
0 m			7.0*	7.0*	7.3*	4.9	5.4*	3.4	4.3*	2.6	2.7*	2.4	7.76
-1.5 m	5.9*	5.9*	10.1*	8.7	7.2*	4.8	5.3*	3.3			3.3*	2.7	7.24
-3.0 m	9.4*	9.4*	8.8*	8.8*	6.3*	4.9	4.5*	3.4			4.1*	3.2	6.33
-4.5 m	5.9*	5.9*	4.1*	4.1*							3.7*	3.7*	4.79

TRIPLE ARTICULATION - DIPPERSTICK 2600 mm

HEIGHT	RADIUS OF LOAD												REACH m			
	1.5 m		3.0 m		4.5 m		6.0 m		7.5 m		AT MAX REACH					
	FRONT	SIDE	FRONT	SIDE	FRONT	SIDE	FRONT	SIDE	FRONT	SIDE	FRONT	SIDE				
+9.0 m													3.6*	3.6*	2.86	
+7.5 m											3.6*	3.6*		2.6*	2.6*	5.31
+6.0 m							4.3*	4.3*	3.4*	3.4*			2.3*	2.3*	6.59	
+4.5 m					6.7*	6.7*	4.3*	4.3*	3.5*	3.5*			2.3*	2.3*	7.34	
+3.0 m	11.4*	11.4*	6.7*	6.7*	6.7*	6.7*	4.1*	4.1*	3.9*	3.7			2.3*	2.3*	7.74	
+1.5 m	6.4*	6.4*	7.4*	7.4*	5.0*	5.0*	4.5*	3.5	3.6*	2.6	2.4*	2.4*	2.4*	2.4*	7.83	
0 m	6.1*	6.1*	8.6*	8.6*	6.6*	4.9	5.2*	3.4			2.7*	2.5	2.7*	2.5	7.62	
-1.5 m	6.2*	6.2*	8.1*	8.1*	6.1*	4.8	4.4*	3.3			3.3*	2.7	3.3*	2.7	7.09	
-3.0 m	9.9*	9.9*	5.4*	5.4*	4.2*	4.2*					2.8*	2.8*	2.8*	2.8*	6.16	
-4.5 m																

MONO BOOM - DIPPERSTICK 3100 mm

HEIGHT	RADIUS OF LOAD												REACH m
	1.5 m		3.0 m		4.5 m		6.0 m		7.5 m		AT MAX REACH		
	FRONT	SIDE	FRONT	SIDE	FRONT	SIDE	FRONT	SIDE	FRONT	SIDE	FRONT	SIDE	
+9.0 m													
+7.5 m							2.4*	2.4*			1.9*	1.9*	6.21
+6.0 m							3.5*	3.5*			1.7*	1.7*	7.33
+4.5 m							3.8*	3.8*	2.9*	2.8	1.7*	1.7*	8.02
+3.0 m			7.4*	7.4*	5.3*	5.3*	4.3*	3.8	3.8*	2.7	1.7*	1.7*	8.38
+1.5 m			9.4*	9.3	6.4*	5.3	4.9*	3.6	4.0*	2.6	1.8*	1.8*	8.46
0 m			7.3*	7.3*	7.1*	4.9	5.2*	3.4	4.2*	2.5	2.0*	2.0*	8.27
-1.5 m	5.3*	5.3*	9.3*	8.6	7.2*	4.8	5.3*	3.3	4.0*	2.5	2.3*	2.3*	7.79
-3.0 m	8.0*	8.0*	9.5*	8.7	6.6*	4.8	4.8*	3.3			3.0*	2.8	6.95
-4.5 m	11.0*	11.0*	7.1*	7.1*	5.0*	4.9					3.6*	3.6*	5.60

TRIPLE ARTICULATION - DIPPERSTICK 3100 mm

HEIGHT	RADIUS OF LOAD												REACH m		
	1.5 m		3.0 m		4.5 m		6.0 m		7.5 m		AT MAX REACH				
	FRONT	SIDE	FRONT	SIDE	FRONT	SIDE	FRONT	SIDE	FRONT	SIDE	FRONT	SIDE			
+9.0 m													2.4*	2.4*	4.06
+7.5 m							3.2*	3.2*	1.9*	1.9*			1.9*	1.9*	6.03
+6.0 m							3.6*	3.6*	1.7*	1.7*			1.7*	1.7*	7.18
+4.5 m					4.7*	4.7*	4.1*	4.1*	1.7*	1.7*	1.7*	1.7*	1.7*	1.7*	7.88
+3.0 m	14.8*	14.8*	6.7*	6.7*	4.4*	4.4*	3.0*	3.0*	2.9*	2.6	1.7*	1.7*	1.7*	1.7*	8.25
+1.5 m	4.8*	4.8*	6.3*	6.3*	4.4*	4.4*	3.7*	3.5	3.1*	2.6	1.8*	1.8*	1.8*	1.8*	8.33
0 m	4.8*	4.8*	8.5*	8.5*	5.9*	4.9	4.3*	3.3	3.3*	2.5	2.0*	2.0*	2.0*	2.0*	8.14
-1.5 m	6.4*	6.4*	9.0*	8.6	6.5*	4.8	4.7*	3.3			2.3*	2.3*	2.3*	2.3*	7.65
-3.0 m	9.4*	9.4*	6.4*	6.4*	4.9*	4.8	3.3*	3.3*			2.8*	2.8*	2.8*	2.8*	6.79
-4.5 m	10.3*	10.3*	4.5*	4.5*	3.1*	3.1*									

All the lift capacity values are in tonnes and without bucket

As per ISO 10567 the indicated load is no more than 87% of hydraulic system lifting capacity or 75% of static tipping load. Values marked with an asterisk are limited by the hydraulic system.

LIFTING CAPACITY - LCVERSION

MONO BOOM - DIPPERSTICK 2200 mm

HEIGHT	RADIUS OF LOAD												
	1.5 m		3.0 m		4.5 m		6.0 m		7.5 m		AT MAX REACH		REACH m
	FRONT	SIDE	FRONT	SIDE	FRONT	SIDE	FRONT	SIDE	FRONT	SIDE	FRONT	SIDE	
+9.0 m													
+7.5 m					4.6*	4.6*					3.7*	3.7*	4.99
+6.0 m					4.5*	4.5*	4.3*	4.3*			3.3*	3.3*	6.33
+4.5 m					5.1*	5.1*	4.4*	4.3			3.2*	3.2*	7.12
+3.0 m					6.1*	6.1*	4.8*	4.1	3.4*	3.0	3.3*	3.0	7.52
+1.5 m					7.0*	5.8	5.2*	4.0	4.3*	2.9	3.5*	2.9	7.62
0 m					7.3*	5.6	5.4*	3.8			3.9*	2.9	7.40
-1.5 m	6.1*	6.1*	9.9*	9.9*	7.0*	5.5	5.2*	3.8			4.3*	3.2	6.86
-3.0 m	10.8*	10.8*	8.1*	8.1*	5.9*	5.6					4.2*	4.0	5.88
-4.5 m											3.4*	3.4*	4.18

TRIPLE ARTICULATION - DIPPERSTICK 2200 mm

HEIGHT	RADIUS OF LOAD														
	1.5 m		3.0 m		4.5 m		6.0 m		7.5 m		AT MAX REACH		REACH m		
	FRONT	SIDE	FRONT	SIDE	FRONT	SIDE	FRONT	SIDE	FRONT	SIDE	FRONT	SIDE			
+9.0 m															
+7.5 m					6.4*	6.4*							3.8*	3.8*	4.77
+6.0 m					6.2*	6.2*	4.3*	4.3*	3.3*	3.3*			3.3*	3.3*	6.16
+4.5 m					6.5*	6.5*	4.1*	4.1*	4.3*	4.3			3.2*	3.2*	6.97
+3.0 m	12.2*	12.2*	6.3*	6.3*	6.3*	6.3*	4.6*	4.1					3.3*	2.8	7.39
+1.5 m			8.8*	8.8*	5.3*	5.3*	5.0*	3.9					3.5*	2.9	7.48
0 m	7.7*	7.7*	9.0*	9.0*	7.0*	5.6	5.1*	3.8					3.9*	3.0	7.26
-1.5 m	7.7*	7.7*	7.1*	7.1*	5.7*	5.5	4.1*	3.8					3.5*	3.3	6.70
-3.0 m	10.2*	10.2*	5.0*	5.0*	3.5*	3.5*							2.6*	2.6*	5.70
-4.5 m															

MONO BOOM - DIPPERSTICK 2600 mm

HEIGHT	RADIUS OF LOAD												
	1.5 m		3.0 m		4.5 m		6.0 m		7.5 m		AT MAX REACH		REACH m
	FRONT	SIDE	FRONT	SIDE	FRONT	SIDE	FRONT	SIDE	FRONT	SIDE	FRONT	SIDE	
+9.0 m													
+7.5 m											2.5*	2.5*	5.51
+6.0 m							3.9*	3.9*			2.3*	2.3*	6.75
+4.5 m					4.7*	4.7*	4.2*	4.2*			2.2*	2.2*	7.49
+3.0 m			8.6*	8.6*	5.8*	5.8*	4.6*	4.2	3.7*	3.0	2.3*	2.3*	7.88
+1.5 m			6.5*	6.5*	6.8*	5.9	5.1*	4.0	4.2*	2.9	2.4*	2.4*	7.96
0 m			7.0*	7.0*	7.3*	5.6	5.4*	3.8	4.3*	2.9	2.7*	2.7*	7.76
-1.5 m	5.9*	5.9*	10.1*	10.1*	7.2*	5.5	5.3*	3.8			3.3*	3.0	7.24
-3.0 m	9.4*	9.4*	8.8*	8.8*	6.3*	5.6	4.5*	3.8			4.1*	3.6	6.33
-4.5 m			5.9*	5.9*	4.1*	4.1*					3.7*	3.7*	4.79

TRIPLE ARTICULATION - DIPPERSTICK 2600 mm

HEIGHT	RADIUS OF LOAD														
	1.5 m		3.0 m		4.5 m		6.0 m		7.5 m		AT MAX REACH		REACH m		
	FRONT	SIDE	FRONT	SIDE	FRONT	SIDE	FRONT	SIDE	FRONT	SIDE	FRONT	SIDE			
+9.0 m													3.6*	3.6*	2.86
+7.5 m							3.6*	3.6*					2.6*	2.6*	5.31
+6.0 m							4.3*	4.3*	3.4*	3.4*			2.3*	2.3*	6.59
+4.5 m					6.7*	6.7*	4.3*	4.3*	3.5*	3.5*			2.3*	2.3*	7.34
+3.0 m	11.4*	11.4*	6.7*	6.7*	6.7*	6.7*	4.1*	4.1*	3.9*	3.9*			2.3*	2.3*	7.74
+1.5 m	6.4*	6.4*	7.4*	7.4*	5.0*	5.0*	4.5*	3.9	3.6*	2.9	2.4*	2.4*	2.4*	2.4*	7.83
0 m	6.1*	6.1*	8.6*	8.6*	6.6*	5.6	5.2*	3.8			2.7*	2.7*	2.7*	2.7*	7.62
-1.5 m	6.2*	6.2*	8.1*	8.1*	6.1*	5.5	4.4*	3.8			3.3*	3.1	3.3*	3.1	7.09
-3.0 m	9.9*	9.9*	5.4*	5.4*	4.2*	4.2*					2.8*	2.8*	2.8*	2.8*	6.16
-4.5 m															

MONO BOOM - DIPPERSTICK 3100 mm

HEIGHT	RADIUS OF LOAD												
	1.5 m		3.0 m		4.5 m		6.0 m		7.5 m		AT MAX REACH		REACH m
	FRONT	SIDE	FRONT	SIDE	FRONT	SIDE	FRONT	SIDE	FRONT	SIDE	FRONT	SIDE	
+9.0 m													
+7.5 m							2.4*	2.4*			1.9*	1.9*	6.21
+6.0 m							3.5*	3.5*			1.7*	1.7*	7.33
+4.5 m							3.8*	3.8*	2.9*	2.9*	1.7*	1.7*	8.02
+3.0 m			7.4*	7.4*	5.3*	5.3*	4.3*	4.2	3.8*	3.0	1.7*	1.7*	8.38
+1.5 m			9.4*	9.4*	6.4*	5.9	4.9*	4.0	4.0*	2.9	1.8*	1.8*	8.46
0 m			7.3*	7.3*	7.1*	5.6	5.2*	3.8	4.2*	2.8	2.0*	2.0*	8.27
-1.5 m	5.3*	5.3*	9.3*	9.3*	7.2*	5.4	5.3*	3.7	4.0*	2.8	2.3*	2.3*	7.79
-3.0 m	8.0*	8.0*	9.5*	9.5*	6.6*	5.5	4.8*	3.7			3.0*	3.0*	6.95
-4.5 m	11.0*	11.0*	7.1*	7.1*	5.0*	5.0*					3.6*	3.6*	5.60

TRIPLE ARTICULATION - DIPPERSTICK 3100 mm

HEIGHT	RADIUS OF LOAD														
	1.5 m		3.0 m		4.5 m		6.0 m		7.5 m		AT MAX REACH		REACH m		
	FRONT	SIDE	FRONT	SIDE	FRONT	SIDE	FRONT	SIDE	FRONT	SIDE	FRONT	SIDE			
+9.0 m													2.4*	2.4*	4.06
+7.5 m							3.2*	3.2*	1.9*	1.9*			1.9*	1.9*	6.03
+6.0 m							3.6*	3.6*	1.7*	1.7*			1.7*	1.7*	7.18
+4.5 m					4.7*	4.7*	4.1*	4.1*	1.7*	1.7*	1.7*	1.7*	1.7*	1.7*	7.88
+3.0 m	14.8*	14.8*	6.7*	6.7*	4.4*	4.4*	3.0*	3.0*	2.9*	2.9*	1.7*	1.7*	1.7*	1.7*	8.25
+1.5 m	4.8*	4.8*	6.3*	6.3*	4.4*	4.4*	3.7*	3.7*	3.1*	2.9	1.8*	1.8*	1.8*	1.8*	8.33
0 m	4.8*	4.8*	8.5*	8.5*	5.9*	5.6	4.3*	3.8	3.3*	2.8	2.0*	2.0*	2.0*	2.0*	8.14
-1.5 m	6.4*	6.4*	9.0*	9.0*	6.5*	5.4	4.7*	3.7			2.3*	2.3*	2.3*	2.3*	7.65
-3.0 m	9.4*	9.4*	6.4*	6.4*	4.9*	4.9*	3.3*	3.3*			2.8*	2.8*	2.8*	2.8*	6.79
-4.5 m	10.3*	10.3*	4.5*	4.5*							3.1*	3.1*	3.1*	3.1*	

All the lift capacity values are in tonnes and without bucket

As per ISO 10567 the indicated load is no more than 87% of hydraulic system lifting capacity or 75% of static tipping load. Values marked with an asterisk are limited by the hydraulic system.



E195C

STANDARD EQUIPMENT

- Tier 4 interim Engine 4 cylinders 4.5 liters
- SCR Engine Technology
- H.A. O.A. (Hydrotronic active operation aid)
- C.P.B. (Continuous Power Boost)
- Auto-Idling device
- I track guide for each side
- Two travel speed with Automatic Down Shift device
- Automatic fuel electrical pump
- Tool box
- Centralized boom lubrication
- Grease bath swing ring
- Standard -25° C engine cold start aid
- Rear mirror
- Rear view camera
- Two spot light on lifting boom
- Cab with structures compliant per ISO 12177-2 (ROPS) and ISO 10262 (FOPS)
- Transparent cab roof and opening front window
- Mechanical seat suspension
- Adjustable armrests
- New generation A.E.P. (Advanced Electronic Processor)
- Multi-function control monitor with integrated rearview camera, mode and attachments selection, gauges for coolant temperature, fuel tank, diesel exhaust tank and fuel economy. Menu functions for fuel consumption graphing, maintenance schedules, system status. Auto-Idling mode selector.
- Automatic air conditioner
- Radio USB&Bluetooth with speakers set
- Heavy lift switch
- Pressure drain switch
- Horn

OPTIONS

- Antitheft device
- Rotating beacon
- Cab additional lights and rain protection
- Cab front guard
- Lower frame cover
- Arm protection
- Front and rear additional track guide
- Hydraulic quick coupler provision
- Object handling kit
- Customer color
- Heated air suspension seat
- Hammer and crusher circuit with foot control
- Hammer and crusher circuit HPC (Hydraulic Proportional Control)
- Hammer, crusher and extra circuit (Hydraulic Proportional Control)
- One piece boom, triple articulation (2 piece boom)
- Arm :
 - 2200
 - 2600
 - 3100
- Shoes: EL version 500 - 600 - 700 mm
LC version 600 - 700 - 800 - 900 mm

Note: standard and optional equipment may vary by country. Consult your NEW HOLLAND dealer for specific details.

PARTS AND SERVICE

The New Holland dealer network is, in itself, the best guarantee of continued productivity for the machines it delivers to its customers. New Holland service technicians are fully equipped to resolve all maintenance and repair issues, with each and every service point providing the high standards they are obliged to observe under New Holland's stringent quality guidelines. The New Holland global parts network ensures fast, reliable, replacement parts for less downtime, increased productivity and, of course, profitable operation for its customers.



AT YOUR OWN DEALERSHIP

The information contained in this brochure is intended to be of general nature only. The NEW HOLLAND KOBELCO CONSTRUCTION MACHINERY S.p.A. company may at any time and from time to time, for technical or other necessary reasons, modify any of the details or specifications of the product described in this brochure. Illustrations do not necessarily show products in standard conditions. The dimensions, weights and capacities shown herein, as well as any conversion data used, are approximate only and are subject to variations within normal manufacturing techniques.

Published by NEW HOLLAND KOBELCO CONSTRUCTION MACHINERY S.p.A.
Printed in Italy - MediaCross Firenze - Cod 30652GB - Printed 02/11

Printed on recycled paper
CoC-FSC 000010 CQ Mixed sources



ELEMENTAL
CHLORINE
FREE
GUARANTEED



www.newholland.com

