

E245C

SPEC SHEET



E245C

ENGINE POWER	129 kW - 173 hp
MAX OPERATING WEIGHT	25418 Kg
BUCKET CAPACITY	0.52 m ³ - 1.31 m ³



BUILT AROUND YOU

E245C

SPECIFICATIONS



ENGINE TIER 4 INTERIM

Make and model FPT F4HFE613S-A0002
 Engine Power (ISO 14396/ECE R120)..... 129 kW/173 hp (2000 rpm)
 Maximum torque..... 740 Nm (1400 rpm)
 Type diesel, electric common rail, direct injection, intercooler, Selective Catalytic Reduction (SCR), exhaust after treatment with AdBlue
 Displacement.....6.728 l
 N. of cylinders.....6
 Bore x stroke..... 104 x 132 mm

Remote engine oil filter for easy replacement

Electronic engine rpm control, dial type

Auto-Idling selector returns engine to minimum rpm when all controls are in neutral position

-25° outside temperature start as standard equipment

The engine complies with 97/68/EC standards stage 3B



ELECTRICAL SYSTEM

Voltage / Alternator24 V / 70 A
 Starter motor 4 kW
 Maintenance-free batteries.....2 x 12V/ 160 Ah



TRANSMISSION

Typehydrostatic, two-speed, Automatic DownShift
 Travel motors axial piston type, double displacement
 Brakes..... automatic discs type
 Final drive..... oil bath, planetary reduction
 Gradeability 70% (35°)
 Travel speeds: low 0 - 3.7 km/h / high 0 - 5.7 km/h
 Drawbar pull241 kN



UNDERCARRIAGE

X-frame undercarriage design
 Reinforced track chain with sealed bushing

	E245C EL	E245C LC
Track rollers (each side)	9	9
Carrier rollers (each side)	2	2
Length of track on ground (mm)	3850	3850
Gauge (mm)	1990	1990
Shoes (mm)	550-700	600-700
	800	800-900

Shoe type Tractor type triple grouser shoe
 No. for each side.....51
 Height of grouser shoe.....26 mm



HYDRAULIC SYSTEM

High capacity double pumps with electronic delivery adjustment.
 Variable displacement pistons pumps revert in neutral automatically to zero. Main Control Valve with Fail Safe Function and Anti drift valve.
 H.A.O.A. (Hydrotronic Active Operation Aid)
 E.S.S.C. (Engine Speed Sensing Control)
 D.O.C. (Dipper Optimised Control)
 C.P.B. (Continuous Power Boost)

3 working Modes

H Mode - Heavy duty excavation work

S Mode - Standard digging and loading work

E Mode - Fuel Economy

Attachments Modes

A Mode - Auxiliary attachments (two-way auxiliary)

B Mode - Breaker (one-way auxiliary)

Attachments flow and pressure setting from cab, 18 presets storage

Hydraulic pump

Max flow at rated engine speed..... 2 x 220 l/min

Piloting circuit gear type pump..... max 20 l/min

Directional control valves

Type 8-spool valve

System Pressures

Boom, Arm&Bucket34.3 MPa

with Power Boost37.8 MPa

Swing29 MPa

Pilot control Circuit.....5MPa



CAPACITIES

Fuel tank.....320 l

Hydraulic system (incl. 167 l tank)255 l

Cooling system.....24 l

AdBlue tank (Urea).....89 l



SWING

Swing motor..... axial piston type

Swing brakehydraulic brake

Swing speed.....0-12.8 rpm



CAB AND CONTROLS

Operator's cab

Structure Fully enclosed steel structure

EVO operator cabine..... evolution in comfort and safety compliant to

ROPS (ISO 12117-2) and FOPS (ISO 10262 level II) standards

Rear camera..... standard

Monitor..... integrated multi-function control monitor with integrated rear view camera display

Operator's seat

Operator's seat Adjustable and reclining device

Operation

Engine control Rotary - type electric throttle

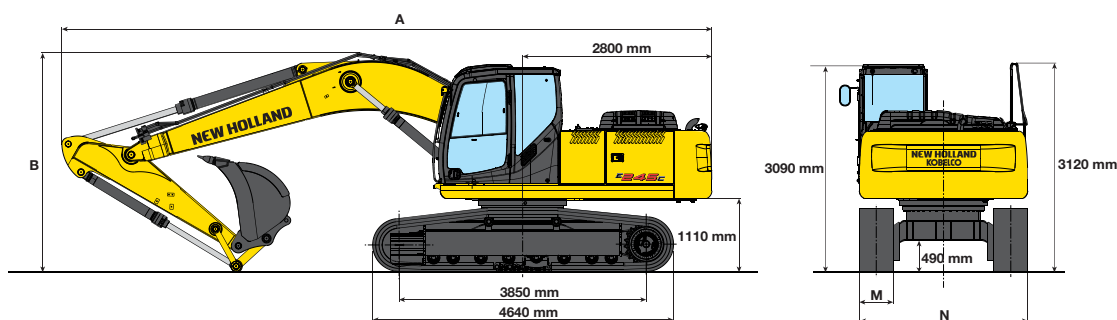
Travel Two hand levers or two foot pedals for

forward and backward operations of each track independently

Excavating and swing Two hand levers for four operations

DIMENSIONS - MONOBOOM

Boom length 5.65 m



EL / LCVERSION

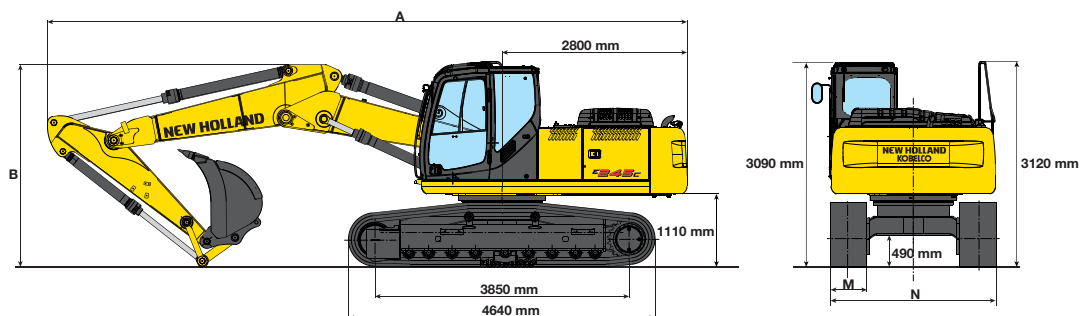
ARM		2080	2400	2940	3500
A - Overall length	mm	9620	9580	9500	9570
B - Boom height in transport position	mm	3260	3160	2970	3160
Overall height	mm	3260	3160	3120	3160

OPERATING WEIGHT - MONOBOOM

		ELVERSION			LC VERSION			
M - Shoe width	mm	550	700	800	600	700	800	900
N - Maximum width	mm	2490	2690	2890	2990	3090	3190	3290
Operating weight*	kg	23050	23680	23840	23300	23810	24150	24490
Ground pressure*	bar	0,53	0,43	0,38	0,50	0,43	0,38	0,35

* 2400 mm arm

DIMENSIONS - TRIPLE ARTICULATION



EL / LCVERSION

ARM		2080	2400	2940	3500
A - Overall length	mm	9690	9670	9650	96320
B - Boom height in transport position	mm	3070	3020	2970	3250
Overall height	mm	3120	3120	3120	3250

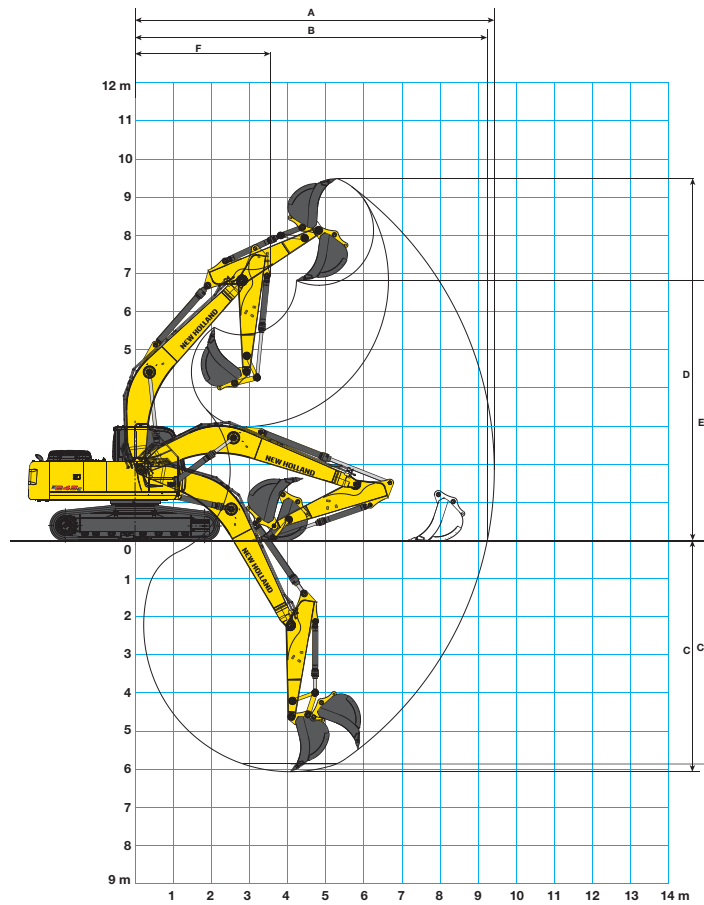
OPERATING WEIGHT - TRIPLE ARTICULATION

		ELVERSION			LC VERSION			
M - Shoe width	mm	550	700	800	600	700	800	900
N - Maximum width	mm	2490	2690	2890	2990	3090	3190	3290
Operating weight*	kg	23730	24360	24510	23970	24490	24830	25160
Ground pressure*	bar	0,55	0,44	0,39	0,51	0,45	0,40	0,36

* 2400 mm arm

E245C

DIGGING PERFORMANCE - MONOBOOM



ARM		2080	2400	2940	3500
A - Max. digging reach	mm	9160	9430	9910	10350
B - Max. digging reach at ground level	mm	8970	9240	9730	10170
C - Max. digging depth	mm	5740	6070	6610	7170
C' - 2,4 mt level digging depth	mm	5521	5861	6427	6996
D - Max. digging height	mm	9420	9500	9710	9740
E - Max. dumping clearance	mm	6610	6700	6930	7170
F - Min. swing radius	mm	3670	3550	3530	3470

BREAKOUT FORCE

ARM		2080	2400	2940	3500
Bucket	daN	15500	15500	15500	15500
Dipperstick	daN	15200	13150	10900	9000

WITH "POWER BOOST" ON

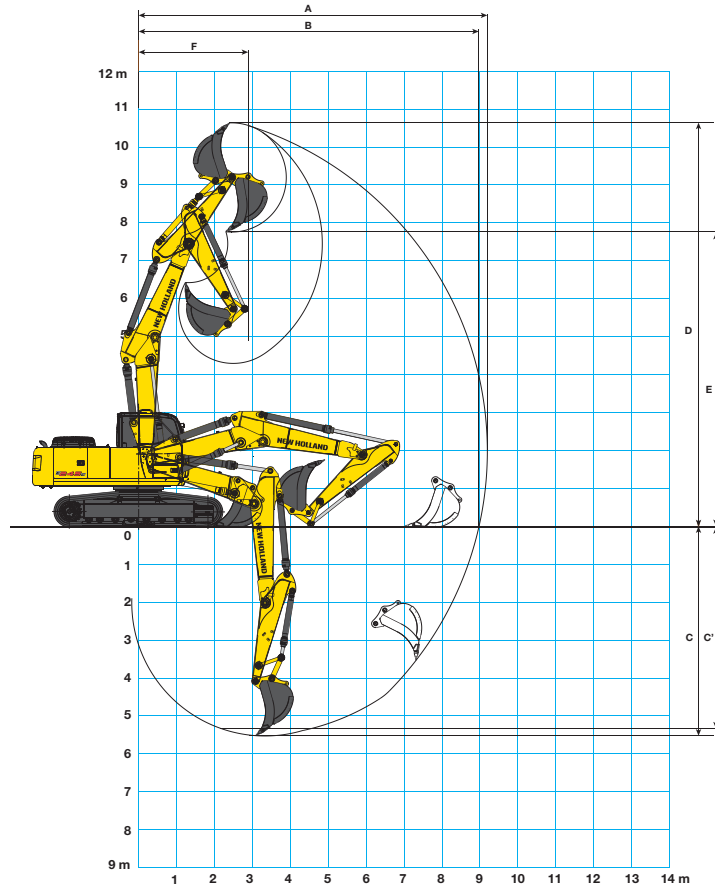
ARM		2080	2400	2940	3500
Bucket	daN	16900	16900	16900	16900
Dipperstick	daN	16500	14250	11800	9800

BUCKETS			E245C EL				E245C LC				
Width mm	Capacity SAE J296 (ISO 7451) m ³	Weight kg	Arm mm				arm mm				
			2080	2400	2940	3500	2080	2400	2940	3500	
750	0,52	505									
850	0,62	540									
1000	0,78	635									
1200	1,00	650									
1300	1,10	700									
1500	1,31	760									

General digging work (specific weight of material < 1.8 t/m³)

Slightly heavy digging work (specific weight of material < 1,5 t/m³)

DIGGING PERFORMANCE - TRIPLE ARTICULATION



ARM		2080	2400	2940	3500
A - Max. digging reach	mm	9200	9580	10080	10530
B - Max. digging reach at ground level	mm	8970	9390	9900	10370
C - Max. digging depth	mm	5530	5830	6380	6920
C' - 2,4 mt level digging depth	mm	5321	5645	6206	6759
D - Max. digging height	mm	10650	10840	11240	11500
E - Max. dumping clearance	mm	7760	7960	8360	8630
F - Min. swing radius	mm	2890	2800	2800	2800

BREAKOUT FORCE

ARM		2080	2400	2940	3500
Bucket	daN	15500	15500	15500	15500
Dipperstick	daN	15200	13150	10900	9000

WITH "POWER BOOST" ON

ARM		2080	2400	2940	3500
Bucket	daN	16900	16900	16900	16900
Dipperstick	daN	16500	14250	11800	9800

BUCKETS			E245C EL				E245C LC			
Width mm	Capacity SAE J296 (ISO 7451) m ³	Weight kg	Arm mm				arm mm			
			2080	2400	2940	3500	2080	2400	2940	3500
750	0,52	505								
850	0,62	540								
1000	0,78	635								
1200	1,00	650								
1300	1,10	700								
1500	1,31	760								

- General digging work (specific weight of material < 1,8 t/m³)
- Slightly heavy digging work (specific weight of material < 1,5 t/m³)
- Loading work (specific weight of material < 1,2 t/m³)

E245C

LIFTING CAPACITY EL VERSION

MONO BOOM - DIPPERSTICK 2080 mm

HEIGHT	RADIUS OF LOAD												REACH m	
	1155 mm		3300 mm		4455 mm		6600 mm		7755 mm		AT MAX REACH			
	FRONT	SIDE	FRONT	SIDE	FRONT	SIDE	FRONT	SIDE	FRONT	SIDE	FRONT	SIDE		
+7.5 m													5,1	
+6.0 m							6,3*	5,7				6,2*	5,2	6,4
+4.5 m			11,0*	11,0*	7,9*	7,9*	6,7*	5,5				6,2*	4,3	7,2
+3.0 m					9,6*	7,6	7,4*	5,3	6,3*	4,0		6,3*	3,9	7,6
+1.5 m					10,8*	7,2	8,0*	5,1	6,6*	3,9		6,5*	3,8	7,7
0 m					11,1*	7,0	8,3*	4,9				6,7*	3,9	7,9
-1.5 m			13,6*	12,7	10,6*	7,0	8,0*	4,9				6,9*	4,2	6,4
-3.0 m			12,1*	12,1*	9,2*	7,2						7,0*	5,2	5,9
-4.5 m												6,4*	4,4*	4,2

TRIPLE ARTICULATION - DIPPERSTICK 2080 mm

HEIGHT	RADIUS OF LOAD												REACH m		
	1155 mm		3300 mm		4455 mm		6600 mm		7755 mm		AT MAX REACH				
	FRONT	SIDE	FRONT	SIDE	FRONT	SIDE	FRONT	SIDE	FRONT	SIDE	FRONT	SIDE			
+9.0 m														3,7	
+7.5 m												6,3*	6,3*	5,8	
+6.0 m									6,9*	6,9*				7,0	
+4.5 m									6,9*	6,9*	5,5*	5,5*		7,7	
+3.0 m									11,1*	11,1*	6,4*	6,4*	4,9*	4,9*	8,0
+1.5 m									10,4*	10,4*	6,5*	6,5*	5,3*	5,2	8,1
0 m									13,6*	13,0*	8,7*	7,1	6,0*	5,0	7,9
-1.5 m									11,5*	11,5*	9,8*	6,9	7,6*	4,8	7,4
-3.0 m									12,6*	12,6*	9,3*	9,3*	8,0*	6,9	6,5
-4.5 m									17,6*	17,6*	8,8*	8,8*	5,7*	5,7	

MONO BOOM - DIPPERSTICK 2400 mm

HEIGHT	RADIUS OF LOAD												REACH m	
	1155 mm		3300 mm		4455 mm		6600 mm		7755 mm		AT MAX REACH			
	FRONT	SIDE	FRONT	SIDE	FRONT	SIDE	FRONT	SIDE	FRONT	SIDE	FRONT	SIDE		
+7.5 m														5,6
+6.0 m														6,8
+4.5 m														7,5
+3.0 m														7,9
+1.5 m														8,0
0 m														8,8
-1.5 m														7,2
-3.0 m														6,8
-4.5 m														4,7

TRIPLE ARTICULATION - DIPPERSTICK 2400 mm

HEIGHT	RADIUS OF LOAD												REACH m	
	1155 mm		3300 mm		4455 mm		6600 mm		7755 mm		AT MAX REACH			
	FRONT	SIDE	FRONT	SIDE	FRONT	SIDE	FRONT	SIDE	FRONT	SIDE	FRONT	SIDE		
+9.0 m														4,4
+7.5 m														6,8
+6.0 m														7,4
+4.5 m														8,0
+3.0 m														8,4
+1.5 m														8,5
0 m														8,3
-1.5 m														7,8
-3.0 m														6,9
-4.5 m														

MONO BOOM - DIPPERSTICK 2940 mm

HEIGHT	RADIUS OF LOAD												REACH m	
	1155 mm		3300 mm		4455 mm		6600 mm		7755 mm		AT MAX REACH			
	FRONT	SIDE	FRONT	SIDE	FRONT	SIDE	FRONT	SIDE	FRONT	SIDE	FRONT	SIDE		
+7.5 m														6,8
+6.0 m														7,4
+4.5 m														8,0
+3.0 m														8,4
+1.5 m														8,4
0 m														8,8
-1.5 m														7,8
-3.0 m														6,9
-4.5 m														5,5

TRIPLE ARTICULATION - DIPPERSTICK 2940 mm

HEIGHT	RADIUS OF LOAD												REACH m	
	1155 mm		3300 mm		4455 mm		6600 mm		7755 mm		AT MAX REACH			
	FRONT	SIDE	FRONT	SIDE	FRONT	SIDE	FRONT	SIDE	FRONT	SIDE	FRONT	SIDE		
+9.0 m														5,3
+7.5 m														6,9
+6.0 m														7,9
+4.5 m														8,6
+3.0 m														8,9
+1.5 m														9,0
0 m														8,8
-1.5 m														8,3
-3.0 m														7,5
-4.5 m														

MONO BOOM - DIPPERSTICK 3500 mm

HEIGHT	RADIUS OF LOAD												REACH m	
	1155 mm		3300 mm		4455 mm		6600 mm		7755 mm		AT MAX REACH			
	FRONT	SIDE	FRONT	SIDE	FRONT	SIDE	FRONT	SIDE	FRONT	SIDE	FRONT	SIDE		
+7.5 m														6,8
+6.0 m														7,8
+4.5 m														8,5
+3.0 m														8,8
+1.5 m														8,9
0 m														8,7
-1.5 m														8,2
-3.0 m														7,4
-4.5 m														6,4

TRIPLE ARTICULATION - DIPPERSTICK 3500 mm

HEIGHT	RADIUS OF LOAD												REACH m		
	1.5 m		3.0 m		4.5 m		6.0 m		7.5 m		9.0 m			AT MAX REACH	
	FRONT	SIDE	FRONT	SIDE	FRONT	SIDE	FRONT	SIDE	FRONT	SIDE	FRONT	SIDE		FRONT	SIDE
+9.0 m														6,0	
+7.5 m														7,5	
+6.0 m														8,4	
+4.5 m														9,0	
+3.0 m														9,3	
+1.5 m														9,4	
0 m														9,2	
-1.5 m														8,8	
-3.0 m														8,0	
-4.5 m														6,9	

All the lift capacity values are in tonnes and without bucket

As per ISO 10567 the indicated load is no more than 87% of hydraulic system lifting capacity or 75% of static tipping load. Values marked with an asterisk are limited by the hydraulic system.

PARTS AND SERVICE

The New Holland dealer network is, in itself, the best guarantee of continued productivity for the machines it delivers to its customers. New Holland service technicians are fully equipped to resolve all maintenance and repair issues, with each and every service point providing the high standards they are obliged to observe under New Holland's stringent quality guidelines.

The New Holland global parts network ensures fast, reliable, replacement parts for less downtime, increased productivity and, of course, profitable operation for its customers.



AT YOUR OWN DEALERSHIP

The information contained in this brochure is intended to be of general nature only. The NEW HOLLAND KOBELCO CONSTRUCTION MACHINERY S.p.A. company may at any time and from time to time, for technical or other necessary reasons, modify any of the details or specifications of the product described in this brochure. Illustrations do not necessarily show products in standard conditions. The dimensions, weights and capacities shown herein, as well as any conversion data used, are approximate only and are subject to variations within normal manufacturing techniques.

Published by NEW HOLLAND KOBELCO CONSTRUCTION MACHINERY S.p.A.
Printed in Italy - MediaCross Firenze - Cod 30640GB - Printed 10/11

Printed on recycled paper
CoC-FSC 000010 CQ Mixed sources



ELEMENTAL
CHLORINE
FREE
GUARANTEED



www.newholland.com

