

E385c

SPEC SHEET



	E385C EL/LC	E385C BEH
ENGINE POWER	213 kW - 286 hp	
MAX OPERATING WEIGHT	38292 Kg	36453 Kg
BUCKET CAPACITY	0.74 m ³ - 1.85 m ³	0.74 m ³ - 2.10 m ³



BUILT AROUND YOU

E385C

POWER AND FAST CYCLES

Powerful Tier 4 interim engine with CEGR and DPF.

The advanced hydraulic system maximizes performance according to the job at hand.

High efficiency hydraulics and new joysticks with optional Hydraulic Proportional Controls (HPC) result in smooth operation, outstanding control and fast cycles.



FUEL EFFICIENCY

High efficiency intelligent hydraulics ensure 100% pump utilization in all applications.

The hydraulic design minimizes friction losses and pressure drops.

New ECO working mode optimizes fuel consumption while maintaining top performance.

EVOLUTION IN COMFORT AND SAFETY

The EVO cab, with full size right window and rear-view camera, provides exceptional all-round visibility.

Cab dampers and soundproofing result in remarkably low noise and vibration levels. Operators can work confidently in the ROPS/FOPS compliant cab.



BUILT IN RELIABILITY AND DURABILITY

The heavy-duty undercarriage is built to last.

The heavy-duty boom and arm, and standard arm protection can deal with the toughest jobs.

Fast maintenance with all service points accessible at ground level.

E385C

SPECIFICATIONS



ENGINE TIER 4 INTERIM

Make and modelHINO J08E-UV
Engine Power (ISO 14396/ECE R120)..... 213 kW/286 hp (2000 rpm)
Maximum torque.....1017 Nm (1600 rpm)
Typediesel electric common rail, direct injection,
intercooler turbocharger

Displacement.....7.684 l
N. of cylinders.....6
Bore x stroke.....112 x 130 mm

Remote engine oil filter for easy replacement

Electronic engine rpm control, dial type

Auto-Idling selector returns engine to minimum rpm when all controls are in neutral position

-25° outside temperature start as standard equipment

The engine complies with 97/68/EC standards stage 3B



ELECTRICAL SYSTEM

Voltage / Alternator24 V /70 A
Starter motor5 kW
Maintenance-free batteries.....2 x 12V/ 160 Ah



TRANSMISSION

Typehydrostatic, two-speed, Automatic DownShift
Travel motors axial piston type, double displacement
Brakes..... automatic discs type
Final drive..... oil bath, planetary reduction
Gradeability70% (35°)
Travel speedslow 0 - 3.3 km/h / high 0 - 5.6 km/h
Drawbar pull321 kN



UNDERCARRIAGE

X-frame undercarriage design

Reinforced track HD chain with sealed bushing

	E385C EL/BEH	E385C LC
Track rollers (each side)	9	9
Carrier rollers (each side)	2	2
Length of track on ground (mm)	4050	4050
Gauge (mm)	2390	2590
Shoes (mm)	600-700	600-700
	800	800-900

Shoe type Tractor type triple grouser shoe
No. for each side.....48
Height of grouser shoe.....30 mm



HYDRAULIC SYSTEM

High capacity double pumps with electronic delivery adjustment.
Variable displacement pistons pumps revert in neutral automatically to zero. Main Control Valve with Fail Safe Function and Anti drift valve.

H.A.O.A. (Hydrotronic Active Operation Aid)

E.S.S.C. (Engine Speed Sensing Control)

D.O.C. (Dipper Optimised Control)

C.P.B. (Continuous Power Boost)

New generation A.E.P. (Advanced Electronic Processor)

3 working Modes

H Mode - Heavy duty excavation work

S Mode - Standard digging and loading work

E Mode - Fuel Economy

Attachments Modes

Breaker (One-way hydraulic flow)

Nibbler (Two-way hydraulic flow)

Attachments flow and pressure setting from cab, 20 presets storage

Hydraulic pump

Max flow at rated engine speed.....2 x 294 l/min

Piloting circuit gear type pump..... max 20 l/min

Directional control valves

Type8-spool valve

System Pressures

Boom, Arm&Bucket34.3 MPa

with Power Boost37.8 MPa

Travel34.3 MPa

Swing29 MPa

Pilot control Circuit..... 5 MPa



CAPACITIES

Engine oil28.5 l

Fuel tank580 l

Hydraulic system (included 245 l tank)413 l

Cooling system.....28.9 l



SWING

Swing motor.....axial piston type

Swing brakehydraulic brake

Swing speed.....0-10 rpm



CAB AND CONTROLS

Operator's cab

Structure Fully enclosed steel structure

EVO operator cabine..... evolution in comfort and safety compliant to
ROPS (ISO 12117-2) and FOPS (ISO 10262 level II) standards

Rear camera..... standard

Monitor..... integrated multi-function control monitor with integrated
rear view camera display

Operator's seat

Operator's seat Adjustable and reclining device

Operation

Engine control Rotary - type electric throttle

Travel Two hand levers or two foot pedals for
forward and backward operations of each track independently

Excavating and swing Two hand levers for four operations

Sound Level

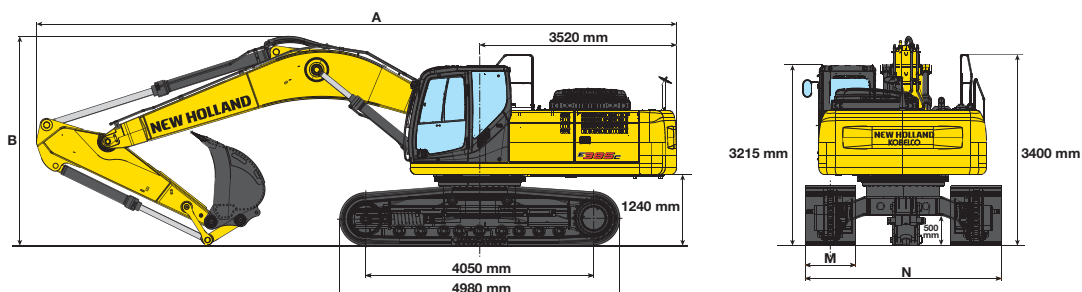
External guaranteed sound level

(EU Directive 2000/14/EC)..... LwA 105 dB(A)

Operator cab sound pressure level (ISO 6396)LpA 71 dB(A)

DIMENSIONS - MONOBOOM

Boom length 6.55 m



EL / LC VERSION

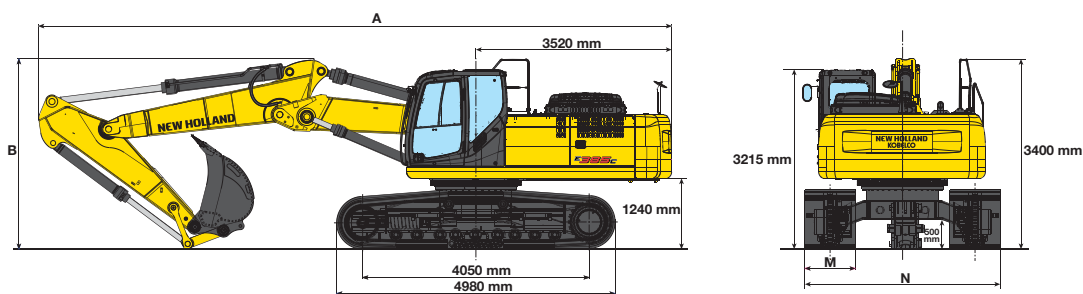
ARM		2330	2600	3300	4150
A - Overall length	mm	11380	11290	11190	11230
B - Boom height in transport position	mm	3720	3720	3460	3600
Overall height	mm	3720	3720	3460	3600

OPERATING WEIGHT - MONOBOOM

		EL VERSION			LC VERSION			
M - Shoe width	mm	600	700	800	600	700	800	900
N - Maximum width	mm	2990	3090	3190	3190	3290	3390	3490
Operating weight*	kg	35550	36010	36500	35630	36090	36580	37070
Ground pressure*	bar	0.72	0.62	0.55	0.720	0.62	0.55	0.50

* 2600 mm arm

DIMENSIONS - TRIPLE ARTICULATION



EL / LC VERSION

ARM		2330	2600	3300	4150
A - Overall length	mm	11320	11200	11170	11180
B - Boom height in transport position	mm	3410	3440	3400	3700
Overall height	mm	3410	3440	3400	3700

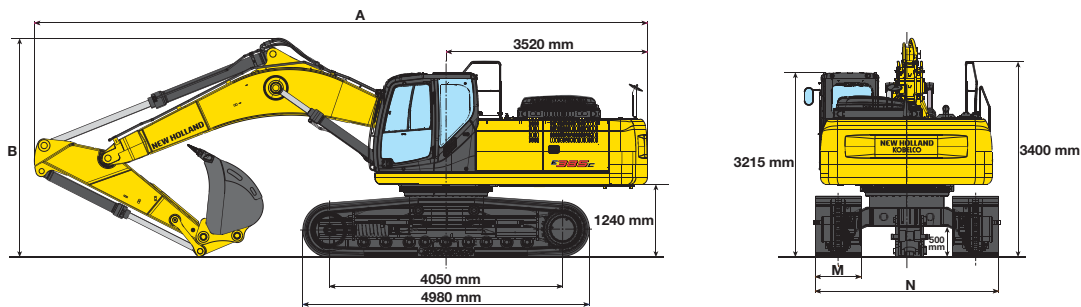
OPERATING WEIGHT - TRIPLE ARTICULATION

		EL VERSION			LC VERSION			
M - Shoe width	mm	600	700	800	600	700	800	900
N - Maximum width	mm	2990	3090	3190	3190	3290	3390	3490
Operating weight*	kg	36250	36710	37200	36330	36800	37290	37780
Ground pressure*	bar	0.73	0.63	0.56	0.73	0.63	0.56	0.51

* 2600 mm arm

DIMENSIONS - BEH

Boom length 5.775 m



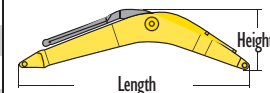
ARM		2150
A - Overall length	mm	10650
B - Boom height in transport position	mm	3810
Overall height	mm	3810

OPERATING WEIGHT - BEH

		EL VERSION		
M - Shoe width	mm	600	700	800
N - Maximum width	mm	2990	3090	3190
Operating weight	kg	35500	35960	36450
Ground pressure	bar	0.72	0.62	0.55

COMPONENT WEIGHTS & DIMENSIONS (mm)

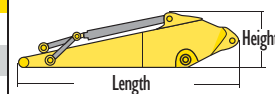
BOOM		MONO BOOM 6.55 m	TRIPLE ART.	BEH 5.775 m
Length	m	6.74	6.694	6.020
Height	m	1.7	1.411	1.840
Width	m	0.826	0.826	0.826
Weight*	kg	3174	3884	3054



*includes arm cylinder

MONOBOOM - TRIPLE ARTICULATION EL / LC VERSION

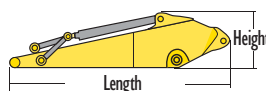
ARM		2330	2600	3300	4150
Length	m	3.586	3.815	4.480	5.350
Height	m	1.177	1.126	0.993	0.997
Width	m	0.450	0.450	0.450	0.450
Weight*	kg	1345	1355	1495	1835



* includes bucket cylinder

BEH VERSION

ARM		2150
Length	m	3.362
Height	m	1.168
Width	m	0.462
Weight*	kg	1320



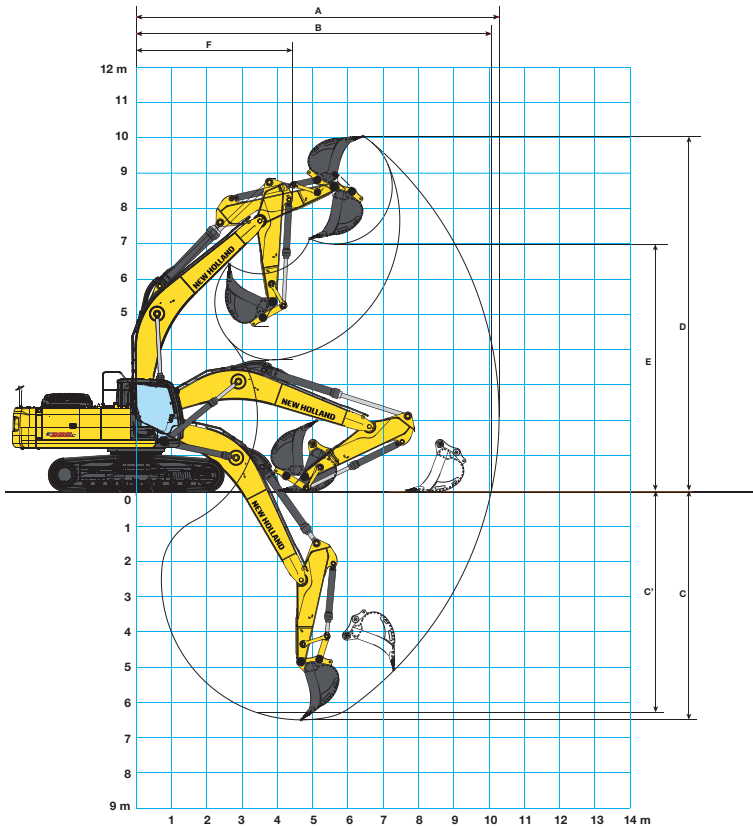
* includes bucket cylinder

Counterweight	kg	8800
---------------	----	------

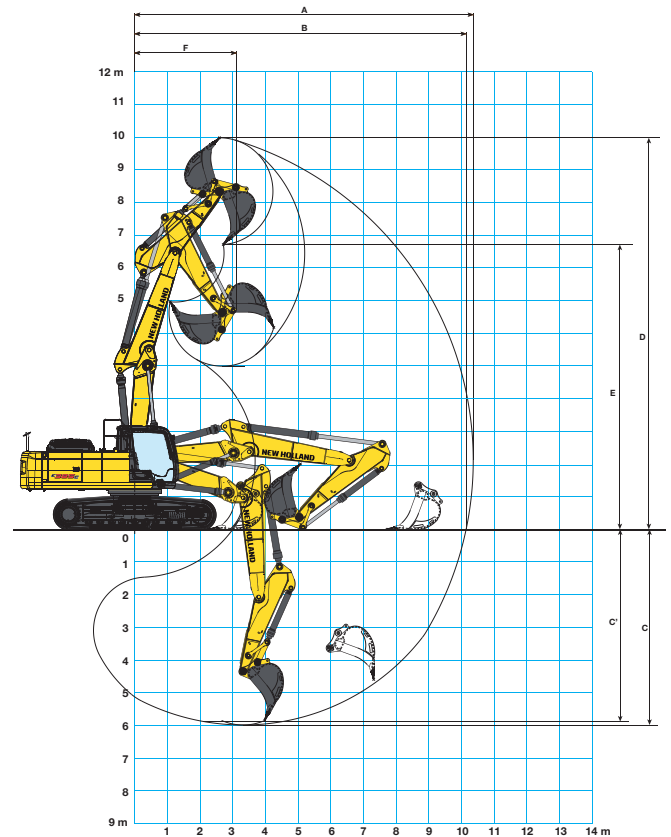
E385C

DIGGING PERFORMANCE

MONOBOOM



TRIPLE ARTICULATION



ARM		MONOBOOM				TRIPLE ARTICULATION				BEH
		2330	2600	3300	4150	2330	2600	3300	4150	2150
A - Max. digging reach	mm	10290	10560	11200	11920	10360	10630	11310	12060	9450
B - Max. digging reach at ground level	mm	10070	10340	11000	11730	10150	10420	11105	11880	9210
C - Max. digging depth	mm	6500	6770	7470	8320	5990	6270	6960	7760	5640
C' - 2,4 mt level digging depth	mm	6290	6580	7310	8180	5580	6160	6860	7680	5435
D - Max. digging height	mm	10050	10240	10570	10680	11980	12230	12820	13380	9710
E - Max. dumping clearance	mm	6990	7160	7460	7620	8720	8980	9560	10120	6470
F - Min. swing radius	mm	4430	4460	4370	4430	3110	3100	2850	3050	3830

BREAKOUT FORCE - ISO 6015

ARM		MONOBOOM / TRIPLE ARTICULATION					BEH
		2330	2600	3300	4150	2150	
Bucket	daN	24310	24115	24115	24115	24360	
Arm	daN	23653	20874	16955	14426	25000	

WITH "POWER BOOST" ON

ARM		MONOBOOM / TRIPLE ARTICULATION					BEH
		2330	2600	3300	4150	2150	
Bucket	daN	26046	25840	25840	25840	26100	
Arm	daN	25343	22365	18165	15456	26790	

LIFTING CAPACITY - BEH VERSION

MONO BOOM - DIPPERSTICK 2150 mm

HEIGHT	RADIUS OF LOAD													
	1.5 m		3.0 m		4.5 m		6.0 m		7.5 m		AT MAX REACH		REACH m	
	FRONT	SIDE	FRONT	SIDE	FRONT	SIDE	FRONT	SIDE	FRONT	SIDE	FRONT	SIDE		
+7.5 m												9.2*	9.2*	5.95
+6.0 m							9.3*	9.3*				9.0*	8.7	7.04
+4.5 m					12.2*	12.2*	10.2*	10.2*	9.1*	7.8		9.1*	7.5	7.68
+3.0 m					14.6*	14.6*	11.3*	10.1	9.6*	7.5		9.2*	6.9	8
+1.5 m					16.5*	14.0	12.3*	9.6	10.0*	7.3		9.5*	6.7	8.02
0 m			17.2*	17.2*	17.1*	13.5	12.7*	9.3	10.2*	7.1		9.9*	6.9	7.75
-1.5 m	18.6*	18.6*	22.6*	22.6*	16.4*	13.5	12.4*	9.3				10.2*	7.5	7.17
-3.0 m			19.1*	19.1*	14.4*	13.7	10.9*	9.4				10.5*	9.1	6.16
-4.5 m												10.1*	10.1*	4.47

All the lift capacity values are in tonnes and without bucket

As per ISO 10567 the indicated load is no more than 87% of hydraulic system lifting capacity or 75% of static tipping load. Values marked with an asterisk are limited by the hydraulic system.



MONOBOOM / TRIPLE ARTICULATION

BUCKETS			E385C EL				E385C LC			
Width	Capacity (ISO 7451)	Weight	Arm mm				Arm mm			
mm	m ³	kg	2330	2600	3300	4150	2330	2600	3300	4150
850	0.735	892								
1000	0.91	947								
1200	1.25	1069								
1350	1.60	1143								
1500	1.60	1248								
1700	1.85	1373								

BEH

BUCKETS			E385C BEH
Width	Capacity (ISO 7451)	Weight	Arm mm
mm	m ³	kg	2150
850	0.735	892	
1000	0.91	947	
1200	1.25	1069	
1350	1.60	1143	
1500	1.60	1248	
1700	1.85	1373	
1830	2.10	1390	

- General digging work (specific weight of material < 1.8 t/m³)
- Slightly heavy digging work (specific weight of material < 1,5 t/m³)
- Loading work (specific weight of material < 1,2 t/m³)

E385C

STANDARD EQUIPMENT

- Tier 4 interim engine 6 cylinders 7.7 liters
- H.A. O.A. (Hydrotronic active operation aid)
- C.P.B. (Continuos Power Boost)
- Auto-Idling device
- Two travel speed with Automatic Down Shift device
- Automatic fuel electrical pump
- Tool box
- Centralized boom lubrication
- Grease bath swing ring
- Standard -25° C engine cold start aid
- Rear mirror
- Rear view camera
- Two spot light on lifting boom
- Dipperstick protection
- Cab with structures compliant per ISO 12177-2 (ROPS) and ISO 10262 (FOPS)
- Transparent cab roof and opening front window
- Mechanical seat suspension
- Adjustable armrests
- New generation A.E.P. (Advanced Electronic Processor)
- Multi-function control monitor with integrated rearview camera, mode and attachments, selection, coolant temperature, fuel tank, and fuel economy. Menu functions for fuel economy graphing, maintenance schedules, system status.
Auto-Idling mode selector.
- Automatic air conditioner
- Radio USB&Bluetooth with speakers set
- Heavy lift switch
- Pressure drain switch
- Horn

OPTIONS

- Antitheft device
- Rotating beacon
- Cab additional lights and rain protection
- Cab front guard
- Lower frame cover
- Front and rear additional track guide
- Hydraulic quick coupler provision
- Object handling kit
- Customer color
- Heated air suspension seat
- Hammer and crusher circuit with foot control
- Hammer and crusher circuit HPC (Hydraulic Proportional Control)
- Hammer, crusher and extra circuit HPC (Hydraulic Proportional Control)
- One piece boom, triple articulation (2 piece boom) or BEH arm for mass excavation
- Arm BEH :
2150 mm XD
- Arm EL/LC :
2330 mm
2600 mm
2600 mm XD
3300 mm
4150 mm
- Shoes: EL/BEH: 600 - 700 - 800 mm
LC: 600 - 700 - 800 - 900 mm

PARTS AND SERVICE

The New Holland dealer network is, in itself, the best guarantee of continued productivity for the machines it delivers to its customers. New Holland service technicians are fully equipped to resolve all maintenance and repair issues, with each and every service point providing the high standards they are obliged to observe under New Holland's stringent quality guidelines. The New Holland global parts network ensures fast, reliable, replacement parts for less downtime, increased productivity and, of course, profitable operation for its customers.



AT YOUR OWN DEALERSHIP

The information contained in this brochure is intended to be of general nature only. The NEW HOLLAND KOBELCO CONSTRUCTION MACHINERY S.p.A. company may at any time and from time to time, for technical or other necessary reasons, modify any of the details or specifications of the product described in this brochure. Illustrations do not necessarily show products in standard conditions. The dimensions, weights and capacities shown herein, as well as any conversion data used, are approximate only and are subject to variations within normal manufacturing techniques.

Published by NEW HOLLAND KOBELCO CONSTRUCTION MACHINERY S.p.A.
Printed in Italy - MediaCross Firenze - Cod 30642GB - Printed 02/11

Printed on recycled paper
CoC-FSC 000010 CQ Mixed sources



ELEMENTAL
CHLORINE
FREE
GUARANTEED



www.newholland.com

