

SPECIFICATIONS

SPEC SHEET

ENGINE TIER 4 INTERIM

Make and model HINO PI1C-VP
 Engine Power (ISO 14396) 271 kW / 364 hp (1850 rpm)
 Maximum torque 1417 Nm (1400 rpm)
 Type Water-cooled, direct injection type diesel engine
 with intercooler turbo-charger

Displacement 10.5 l
 N. of cylinders 6
 Bore x stroke 122 x 150 mm

Remote engine oil filter for easy replacement

Electronic engine rpm control, dial type

Auto-Idling selector returns engine to minimum rpm when all controls are in neutral position

-25° outside temperature start as standard equipment

The engine complies with 97/68/EC standards stage 3B

ELECTRICAL SYSTEM

Voltage / Alternator 24V / 70A
 Starter motor 6 kW
 Maintenance-free batteries 2 x 12V / 160Ah

TRANSMISSION

Type hydrostatic, two-speed, Automatic DownShift
 Travel motors axial piston type, double displacement
 Brakes automatic discs type
 Final drive oil bath, planetary reduction
 Gradeability 70% (35°)
 Travel speeds low 0 -3.5 km/h / high 0 - 5.6 km/h
 Drawbar pull 400 kN

UNDERCARRIAGE

Type variable gauge
 X-frame undercarriage design
 Reinforced track HD chain with sealed bushing

E485C LCH/BEH

Track rollers (each side)	9
Carrier rollers (each side)	3
Length of track on ground (mm)	4400
Minimum gauge (mm)	2390
Maximum gauge (mm)	2890
Shoes available (mm)	600-700
	800-900

Shoe type Tractor type triple grouser shoe
 No. for each side 50
 Height of grouser shoe 36 mm

HYDRAULIC SYSTEM

High capacity double pumps with electronic delivery adjustment.
 Variable displacement pistons pumps revert in neutral automatically to zero. Main Control Valve with Fail Safe Function and Anti drift valve.

H.A.O.A. (Hydrotronic Active Operation Aid)

E.S.S.C. (Engine Speed Sensing Control)

D.O.C. (Dipper Optimised Control)

C.P.B. (Continuous Power Boost)

New generation A.E.P. (Advanced Electronic Processor)

3 working Modes

H Mode - Heavy duty excavation work

S Mode - Standard digging and loading work

E Mode - Fuel Economy

Attachments Modes

Breaker (One-way hydraulic flow)

Nibbler (Two-way hydraulic flow)

Attachments flow and pressure setting from cab, 20 presets storage

Hydraulic pump

Max flow at rated engine speed 2 x 370 l/min

Piloting circuit gear type pump max 30 l/min

Directional control valves

Type 8-spool valve

System Pressures

Boom, Arm & Bucket 31.4 MPa

with Power Boost 34.3 MPa

Travel 34.3 MPa

Swing 25 MPa

Pilot control Circuit 5 MPa

CAPACITIES

Engine oil 42.5 l

Fuel tank 640 l

Hydraulic system (included 283 l tank) 530 l

Cooling system 47.4 l

SWING

Swing motor axial piston type

Swing brake hydraulic brake

Swing speed 0-7.8 rpm

CAB AND CONTROLS

Operator's cab

Structure Fully enclosed steel structure

EVO operator cab evolution in comfort and safety compliant to ROPS (ISO 12117-2) and FOPS (ISO 10262 level II) standards

Rear camera standard

Monitor integrated multi-function control monitor with integrated rear view camera display

Operator's seat

Operator's seat Adjustable and reclining device

Operation

Travel Two hand levers or two foot pedals for forward and backward operations of each track independently

Excavating and swing Two hand levers for four operations

Sound Level

External guaranteed sound level

(EU Directive 2000/14/EC) LwA 106 dB(A)

Operator cab sound pressure level (ISO 6396) LpA 71 dB(A)

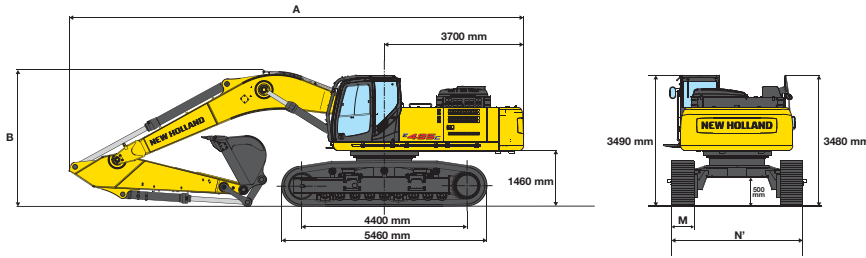


BUILT AROUND YOU

E485C

DIMENSIONS - MONOBOOM

Boom length 7.00 m



LCH VERSION

ARM		2900	3450	4040
A - Overall length	mm	12135	12080	12075
B - Boom height in transport position	mm	3750	3630	3630
Overall height	mm	3750	3630	3630

OPERATING WEIGHT - MONOBOOM

		LCH VERSION			
M - Shoe width	mm	600	700	800	900
N - Width (reduced for trasportation)	mm	2990	3090	3190	3290
N' - Maximum width	mm	3490	3590	3690	3790

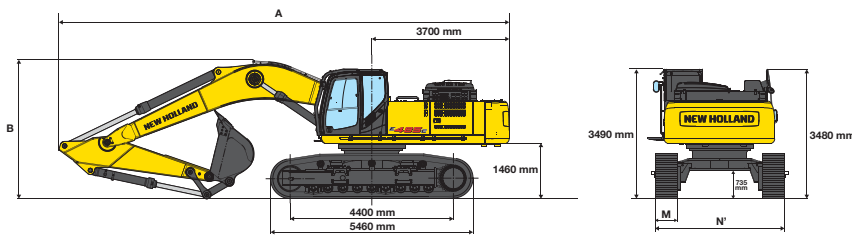
		LCH VERSION			
Operating weight	kg	49080	49630	50190	50740
Ground pressure	bar	0.91	0.79	0.7	0.63

		LCH VERSION			
Operating weight	kg	49260	49810	50360	50910
Ground pressure	bar	0.92	0.80	0.70	0.63

		LCH VERSION			
Operating weight	kg	49450	50000	50550	51100
Ground pressure	bar	0.91	0.79	0.70	0.63

DIMENSIONS - BEH

Boom length 6.30 m



ARM		2600
A - Overall length	mm	11490
B - Boom height in transport position	mm	3830
Overall height	mm	3830

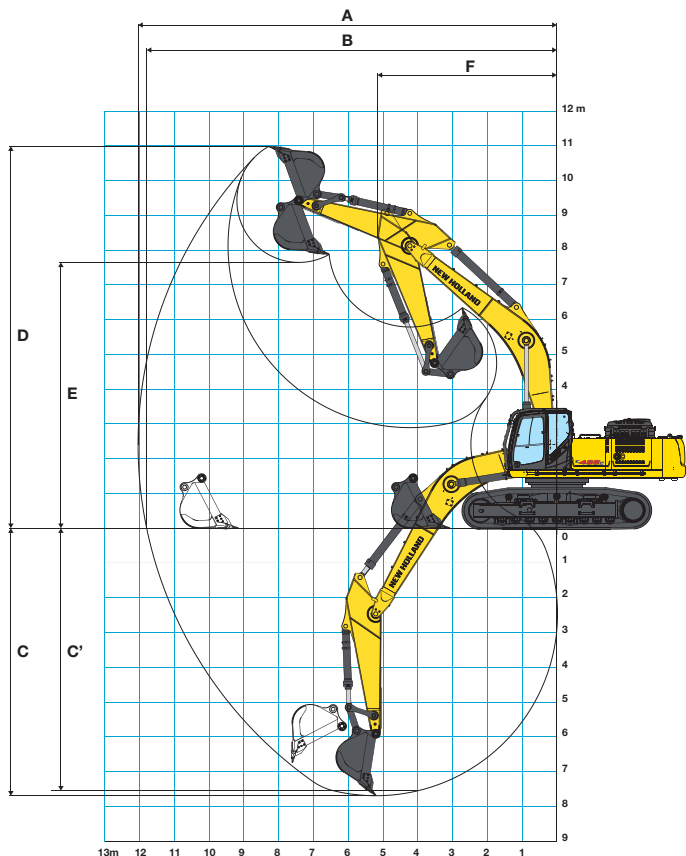
OPERATING WEIGHT - BEH

		BEH VERSION			
M - Shoe width	mm	600	700	800	900
N - Width (reduced for trasportation)	mm	2990	3090	3190	3290
N' - Maximum width	mm	3490	3590	3690	3790

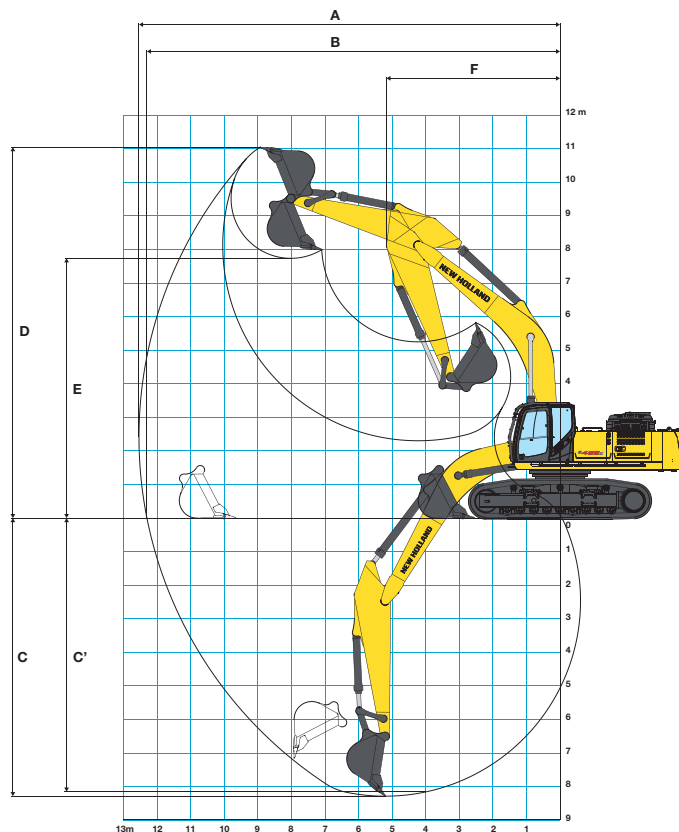
		LCH VERSION			
Operating weight	kg	48350	48900	49450	50000
Ground pressure	bar	0.90	0.77	0.69	0.62

DIGGING PERFORMANCE

MONOBOOM



BEH



ARM		MONOBOOM			BEH
		2900	3450	4040	2600
A - Max. digging reach	mm	11520	12050	12540	10600
B - Max. digging reach at ground level	mm	11260	11800	12310	10310
C - Max. digging depth	mm	7140	7690	8280	6260
C' - 2,4 mt level digging depth	mm	6980	7550	8150	6080
D - Max. digging height	mm	10730	10990	11050	10150
E - Max. dumping clearance	mm	7400	7650	7740	6940
F - Min. swing radius	mm	5220	5160	5170	4710

BREAKOUT FORCE

ARM		MONOBOOM			BEH
		2900	3450	4040	2600
Bucket	daN	24800	24800	24800	25390
Arm	daN	22640	19985	17945	23250

WITH "POWER BOOST" ON

ARM		MONOBOOM			BEH
		2900	3450	4040	2600
Bucket	daN	27000	27000	27000	27740
Arm	daN	24780	21820	19580	25390

MONOBOOM

BUCKETS			E485C LCH		
Width (mm)	Capacity (ISO 7451) m ³	Weight (kg)	Arm mm		
			2900	3450	4040
1320	1.66	1231			
1420	1.83	1328			
1550	2.05	1409			
1670	2.26	1468			

BEH

BUCKETS			E485C BEH
Width (mm)	Capacity (ISO 7451) m ³	Weight (kg)	Arm mm
			2600
1320	1.66	1231	
1420	1.83	1328	
1550	2.05	1409	
1670	2.26	1468	
1740	2.60	1850	

General digging work (specific weight of material < 1.8 t/m³)

E485C

LIFTING CAPACITY - MONOBOOM

LCH VERSION - DIPPERSTICK 2900 mm

HEIGHT	RADIUS OF LOAD																
	1.5 m		3.0 m		4.5 m		6.0 m		7.5 m		9.0 m		10.5 m		AT MAX REACH		
	FRONT	SIDE	FRONT	SIDE	FRONT	SIDE	FRONT	SIDE	FRONT	SIDE	FRONT	SIDE	FRONT	SIDE	FRONT	SIDE	REACH m
+7.5 m									9.7*	9.7*					9.7*	9.7*	8.56
+6.0 m									10.3*	10.3*	9.8*	9.3			9.7*	8.9*	9.3
+4.5 m					17.6*	17.6*	13.4*	13.4*	11.3*	11.3*	10.2*	9.1			9.9*	8.1	9.75
+3.0 m					21.8*	21.8*	15.4*	15.4*	12.5*	11.4*	10.8*	8.9			10.2*	7.7	9.95
+1.5 m					16.4*	16.4*	17.0*	14.8	13.5*	11.0*	11.4*	8.7			10.5*	7.6	9.92
0 m					20.2*	20.2*	17.9*	14.4*	14.1	10.8*	11.7*	8.5*			10.9*	7.8	9.66
-1.5 m			15.7*	15.7*	23.6*	21.7	17.9*	14.3	14.2*	10.7	11.6*	8.5			11.4*	8.4	9.14
-3.0 m			24.5*	24.5*	22.0*	22.0*	17.0*	14.4	13.5*	10.7					11.9*	9.5	8.32
-4.5 m			24.9*	24.9*	19.1*	19.1*	14.9*	14.7							12.2*	11.9	7.08

LCH VERSION - DIPPERSTICK 3450 mm

HEIGHT	RADIUS OF LOAD																
	1.5 m		3.0 m		4.5 m		6.0 m		7.5 m		9.0 m		10.5 m		AT MAX REACH		
	FRONT	SIDE	FRONT	SIDE	FRONT	SIDE	FRONT	SIDE	FRONT	SIDE	FRONT	SIDE	FRONT	SIDE	FRONT	SIDE	REACH m
+9.0 m															8.42*	8.42*	8.16
+7.5 m											8.9*	8.9*			8.1*	8.1*	9.19
+6.0 m									9.6*	9.6*	9.1*	9.1*			8.1*	8.1*	9.88
+4.5 m							12.4*	12.4*	10.6*	10.6*	9.6*	9.2			8.3*	7.5	10.31
+3.0 m					20.1*	20.1*	14.5*	14.5	11.8*	11.5	10.3*	8.9			8.7*	7.1	10.5
+1.5 m					19.9*	19.9*	16.3*	14.8	12.9*	11.0	11.0*	8.6			9.4*	7.0	10.47
0 m			8.4*	8.4*	20.6*	20.6*	17.5*	14.3	13.7*	10.7	11.5*	8.5			10.1*	7.2	10.22
-1.5 m	10.9*	10.9*	14.4*	14.4*	23.9*	21.5	17.8*	14.1	14.1*	10.5	11.6*	8.4			10.6*	7.6	9.73
-3.0 m	16.6*	16.6*	21.3*	21.3*	22.7*	21.6	17.3*	14.2	13.7*	10.5					11.0*	8.5	8.96
-4.5 m			27.6*	27.6*	20.3*	20.3*	15.7*	14.4	12.2*	10.8					11.4*	10.2	7.84
-6.0 m					15.9*	15.9*	11.9*	11.9*							11.5*	11.5*	6.14

LCH VERSION - DIPPERSTICK 4040 mm

HEIGHT	RADIUS OF LOAD																
	1.5 m		3.0 m		4.5 m		6.0 m		7.5 m		9.0 m		10.5 m		AT MAX REACH		
	FRONT	SIDE	FRONT	SIDE	FRONT	SIDE	FRONT	SIDE	FRONT	SIDE	FRONT	SIDE	FRONT	SIDE	FRONT	SIDE	REACH m
+9.0 m															7.0*	7.0*	8.79
+7.5 m											8.0*	8.0*			6.8*	6.8*	9.75
+6.0 m											8.4*	8.4*			6.8*	6.8*	10.4
+4.5 m									9.8*	9.8*	9.0*	9.0*	8.5*	7.2	7.0*	6.9	10.81
+3.0 m					18.3*	18.3*	13.5*	13.5*	11.1*	11.1*	9.7*	8.9	8.9*	7.1	7.3*	6.6	11
+1.5 m					21.8*	21.8*	15.5*	15.0	12.3*	11.0	10.5*	8.6	9.3*	6.9	7.9*	6.5	10.97
0 m			9.5*	9.5*	22.2*	21.6	16.9*	14.4	13.3*	10.7	11.1*	8.4	9.6*	6.8	8.7*	6.6	10.73
-1.5 m	10.2*	10.2*	13.9*	13.9*	24.0*	21.3	17.6*	14.1	13.8*	10.4	11.4*	8.2			9.9*	7.0	10.27
-3.0 m	14.8*	14.8*	19.4*	19.4*	23.3*	21.4	17.4*	14.0	13.8*	10.4	11.2*	8.2			10.4*	7.7	9.54
-4.5 m	20.2*	20.2*	26.4*	26.4*	21.4*	21.4*	16.3*	14.2	12.8*	10.5					10.9*	9.0	8.49
-6.0 m			24.4*	24.4*	17.9*	17.9*	13.6*	13.6*							11.3*	11.3*	6.97

LIFTING CAPACITY - BEH

DIPPERSTICK 2600 mm

HEIGHT	RADIUS OF LOAD																
	1.5 m		3.0 m		4.5 m		6.0 m		7.5 m		9.0 m		10.5 m		AT MAX REACH		
	FRONT	SIDE	FRONT	SIDE	FRONT	SIDE	FRONT	SIDE	FRONT	SIDE	FRONT	SIDE	FRONT	SIDE	FRONT	SIDE	REACH m
+7.5 m															11.4*	11.4*	7.44
+6.0 m									11.5*	11.5*					11.4*	10.7	8.28
+4.5 m					17.9*	17.9*	14.2*	14.2*	12.3*	12.1					11.5*	9.6	8.78
+3.0 m					22.1*	22.1*	16.1*	16.0	13.3*	11.8	11.8*	9.1			11.8*	9.1	9.01
+1.5 m					24.6*	22.9	17.7*	15.4	14.2*	11.4					12.2*	9.0	8.98
0 m					25.1*	22.5	18.5*	15.0	14.7*	11.2					12.6*	9.3	8.68
-1.5 m			21.7*	21.7*	24.2*	22.5	18.3*	14.9	14.4*	11.1					13.1*	10.2	8.1
-3.0 m			29.4*	29.4*	21.9*	21.9*	16.8*	15.1							13.5*	12.0	7.16
-4.5 m					17.2*	17.2*									13.4*	13.4*	5.67

All the lift capacity values are in tonnes and without bucket

As per ISO 10567 the indicated load is no more than 87% of hydraulic system lifting capacity or 75% of static tipping load. Values marked with an asterisk are limited by the hydraulic system.



NEW HOLLAND

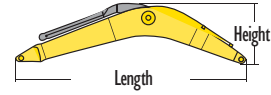
NEW HOLLAND
KOBELCO

DEAR
DEAR
DEAR
DEAR
E-ABS C
DEAR

E485C

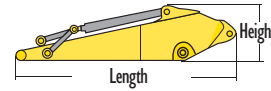
COMPONENT WEIGHTS & DIMENSIONS

BOOM		MONO BOOM 7.00 m	BEH 5.780 m
Length	mm	7260	6560
Height	mm	1750	1880
Width	mm	930	930
Weight	kg	3940	3830



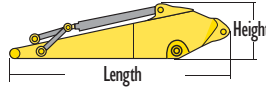
MONOBOOM - LCHVERSION

ARM		2900	3450	4040
Length	mm	4200	4730	5340
Height	mm	1140	1140	1130
Width	mm	540	540	540
Weight	kg	1840	2020	2230



BEHVERSION

ARM		2600
Length	mm	3900
Height	mm	1190
Width	mm	540
Weight	kg	1780



Counterweight	kg	10000
---------------	----	-------

STANDARD EQUIPMENT

- Tier 4 interim engine 6 cylinders 10.5 liters
- H.A. O.A. (Hydrotronic active operation aid)
- C.P.B. (Continuous Power Boost)
- Auto-Idling device
- HD chains
- 2 track guides for each side
- Variable undercarriage
- Automatic fuel electrical pump
- Tool box
- Centralised automatic lubrication
- Grease bath swing ring
- Standard -25° C engine cold start aid
- Rear mirror
- Rear view camera
- Two spot light on lifting boom
- Arm protection
- Cab with structures compliant per ISO 12177-2 (ROPS) and ISO 10262 (FOPS)
- Transparent cab roof and opening front window
- Mechanical seat suspension
- Adjustable armrests
- New generation A.E.P. (Advanced Electronic Processor)
Multi-function control monitor with integrated rearview camera, mode and attachments, selection, coolant temperature, fuel tank, and fuel economy. Menu functions for fuel economy graphing, maintenance schedules, system status. Auto-Idling mode selector.
- Automatic air conditioner
- Radio USB&Bluetooth with speakers set
- Heavy lift switch
- Pressure drain switch
- Horn

OPTIONS

- Antitheft device
- Rotating beacon
- Cab additional lights and rain protection
- Cab front guard
- Lower frame cover
- Hydraulic quick coupler provision
- Object handling kit
- Customer color
- Heated air suspension seat
- Hammer and crusher circuit with foot control
- Hammer and crusher circuit HPC (Hydraulic Proportional Control)
- Hammer, crusher and extra circuit HPC (Hydraulic Proportional Control)
- One piece boom or BEH arm for mass excavation
- Arm HD:
 - 2600 mm (BEH version)
 - 2900 mm
 - 3450 mm
 - 4040 mm
- Shoes:
 - LCH/BEH: 600 - 700 - 800 - 900 mm
 - Track chain with double grouser 600 mm

Note: standard and optional equipment may vary by country. Consult your NEW HOLLAND dealer for specific details.

PARTS AND SERVICE

The New Holland dealer network is, in itself, the best guarantee of continued productivity for the machines it delivers to its customers. New Holland service technicians are fully equipped to resolve all maintenance and repair issues, with each and every service point providing the high standards they are obliged to observe under New Holland's stringent quality guidelines. The New Holland global parts network ensures fast, reliable, replacement parts for less downtime, increased productivity and, of course, profitable operation for its customers



AT YOUR OWN DEALERSHIP

The information contained in this brochure is intended to be of general nature only. The NEW HOLLAND KOBELCO CONSTRUCTION MACHINERY S.p.A. company may at any time and from time to time, for technical or other necessary reasons, modify any of the details or specifications of the product described in this brochure. Illustrations do not necessarily show products in standard conditions. The dimensions, weights and capacities shown herein, as well as any conversion data used, are approximate only and are subject to variations within normal manufacturing techniques.

Published by NEW HOLLAND KOBELCO CONSTRUCTION MACHINERY S.p.A.
Printed in Italy - MediaCross Firenze - Cod 3066 IGB - Printed 05/12

Printed on recycled paper
CoC-FSC 000010 CQ Mixed sources



ELEMENTAL
CHLORINE
FREE
GUARANTEED



www.newholland.com

