

**Unchallenged**



**Mistblowers**



## Multi-purpose

HARDI MISTBLOWERS spray – without compromise - all your different crops. Whatever you grow – from small bushes to large tree plantations – only HARDI Air Sprayers truly meet every need.



### Pumps

More than 55 years of design and production experience have brought the HARDI pump to every point of the globe; a unique low maintenance cast iron pump is the heart of the sprayer, and is among the many details that makes cost of ownership very low. Ask your dealer for other pump solutions.

## Robustness and simplicity

Benefit from the expertise gained with HARDI's many years of worldwide experience in orchard spraying. Everything– from tank design and built to the latest electronic control systems - reflects that valued heritage. Detail matters at HARDI ! Our blowers are equipped with a centrifugal clutch to ensure a smooth, start and stop avoiding damage to the driving system.



### Performance and Capacity

HARDI orchard sprayers will meet all your needs; from the very gentle spraying of high valued berries to treating the highest of fruits in tall tree canopies. Benefit from outstanding work rates. Choose the tank size and spraying method to meet your needs and time restraints.

HARDI: The specialists fully meet all your many needs.



### Safety features

To meet all your expectations. Filling, mixing and loading your trailed mistblower exceed every standard with the compact TurboFiller. Undiluted liquid formulations are induced safely and at speed. Dry formulations can be premixed and induced too. No mess, no hold back, no spills, no need for buckets and stirring sticks.

HARDI: Operator and environmental safety have first priority.

## ZEBRA



### ZEBRA

The most versatile and easy-to-use mistblower; ideal for lighter workloads. ZEBRA adapts perfectly to fields with narrow rows and crops grown on terraces.

ZEBRA fans - EF650 or EF750 - can be disconnected to allow agitation in the spray tank when needed. Air distribution optimised with two lower deflectors. ZEBRA is robust. Impact proof polyethylene used to make fan housing and tank.

## ZENIT



### ZENIT

Compact and robust: Ideal for the steepest hills and narrowest plantations and comes with your choice of air kit; the AB750 or AB820

ZENIT lift mounted mistblowers are available in tank sizes of 400, 600, 1000 and 1200 litres; all with a heavy-duty chassis Safety with a 15 litre hand wash tank integrated into the main tank outline. As an option, the kit for cleaning the internal spraying system of the ZENIT from the safety of your cab is offered



## NEPTUN

NEPTUN 1000 1500 2000 3000 litres

High quality impact resistant polyethylene tank

Air kits - EF or AB – to meet your needs



**NEPTUN EF:** the classic basic air sprayer that is ideal for small scale farming. NEPTUN EF air kit can spray two half rows, at the same time designed for medium and small powered tractors with a smooth stop and start of the PTO.

**NEPTUN AB:** for the best professional spraying. Benefit from air vanes in the inlet, two speed gearbox and centrifugal clutch. Your choice of axial fan from 750, 820 to 920 mm. Adapt air flows to your crop spraying needs; DUO or V deflectors are available.

Economise on power input when spraying medium, small trees and bushes.

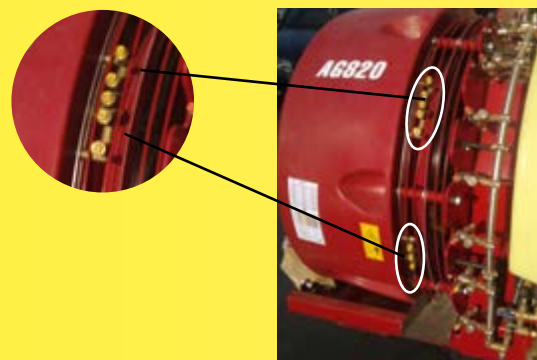
Manual and electrical operating units are offered, as well as pressure equalisation. (920 not available on 1500 and 1000)

## ZATURN

1000 1500 2000 3000 litres

### Dual spray line

Where extreme volumes are your demand, a dual spray line improves radically the application quality.



The ZATURN can – without any compromise - spray all your various crops. Whatever you grow – from small bushes to large tree plantations – only the ZATURN can truly meet every need.



The adjustable blower with its 2-speed gearbox and 3 different fan blade settings are the key to deliver the wide range of controlled and managed air volumes.



The easily filled, front fitted rinsing tank puts its weight securely over the drawbar.

Easy to see tank content gauge; right where you want it.

### Air kit

AG820 / 920 air kits are ideal for narrow orchards, where a precise and firm air flow is required for spraying.

Choose AA650 /750 for the ZATURN C, the 94 cm wide Compact addition for narrow plantations such as vine and soft fruit.

No catching of branches or other hazards with its impact proof, smoothly shaped polyethylene tank and fan housing.

Equipped with lower flaps to provide superior control of the air, and to avoid ground dust turbulence.

AG air kits are equipped with a Turbo channel as standard. Benefit from its secure very efficient input/output ratio between power consumption and air volume as well as an outstanding air distribution.



## JUPITER



JUPITER is the leader in this market segment; benefiting from invaluable grower experiences and technical expertise.

JUPITER has at its heart the highest of air performing kits. Choose from the most powerful air kits; symmetric air flow, SF 65 – 65.000 m<sup>3</sup>/h or SF85 – 85.000 m<sup>3</sup>/h or the XF90 – 90.000 m<sup>3</sup>/h

Has trusted performance with the HD HARDI two speed gearbox - and neutral position to secure many years' rentability in the tough hot conditions so often met in orchard spraying.

HARDI pumps for most sprayer output needs from 140 to 260 l/min



### Remote control

The electrically operated CB/2 or 4 control unit provides a comfortable and safe operator environment.



## MERCURY

- using state of the art spray technology
- is the flagship for all mistblowers.

### XF90

The air kit XF90 is easily set up for the task, the 46 nozzles are divided into 2x3 sections.



### TurboFiller

Safety built-in: Load the MERCURY from ground level, at ease and at speed with the TurboFiller. Gain tank access when needed with a solid and safe foldable step.



Air kits that spoil you for choice: SF 65 – 65.000 m<sup>3</sup>/h or SF85 – 85.000 m<sup>3</sup>/h XF90 – 90.000 m<sup>3</sup>/h and with a gearbox to match; the two speed HD HARDI and the optional DUO, JET deflectors or V deflector

Pumps to meet all your spraying needs from low to high volumes in every orchard; 363/7 -140 l/min -20 bar or 363/10 194 l/min -15 bar or 463/10 263 l/min -15 bar.



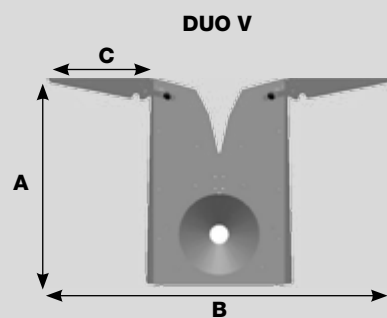
## Air kits



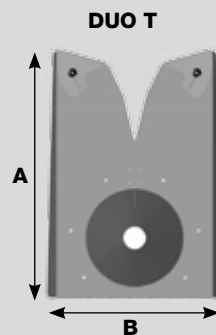
Where vertical deflectors are not the best option for you, then consider a V deflector or a TOP MIX deflector to control air direction towards the target crop.



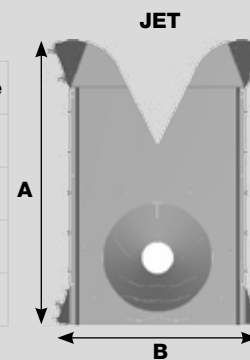
Air kits	EF650	EF750	EF820	AB650	AB750	AB820	AG820	i AG820	AG920	SF65	SF85	XF90
<b>Air volume m³/h</b>	25000	30000	35000	20/25000	23/28000	28/35000	38/45000	32/40000	48/55000	57/65000	76/85000	80/9000
<b>Nozzle bodies</b>	2x6	2x6	2x6	2x6	2x6	2x6	2x7	2x8	2x7	2x10	2x10	2x23
<b>Gearbox*</b>	*	*	1S&N	2S&N	2S&N	2S&N	2S&N	2S&N	2S&N	2S&N	2S&N	2S&N
<b>Power consumption HP</b>	15	20	30	20	25	40	35	40	50	50	60	70
<b>Fan diameter mm</b>	650	750	820	650	750	820	820	820	920	820	920	920
<b>Spraying dimension H x W</b>	2x3	2x3	4x4	2x3	3x3	4x4	5x4	5x4	5x5	6x4	5x6	7x6



Ø	A	B	C	Nozzle
650	1,4	1	0,5	2x8
750	1,6	1,1	0,6	2x9
820	1,8	1,3	0,7	2x10
920	1,8	1,3	0,7	2x11



Ø	A	B	Nozzle
650	1,4	1	2x8
750	1,6	1,1	2x9
820	1,8	1,3	2x10
920	1,9	1,5	2x11



Ø	A	B	Nozzle	Air kit
650	1,5	0,9-1,0	2x8	AG
750	1,6	0,9-1,0	2x9	AG
820	1,9	1,1-1,3	2x11	AG
920	2	1,2-1,4	2x12	AG
820	1,9	1,4-1,6	2x11	SF
920	2	1,4-1,6	2x12	SF



# Control boxes

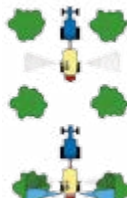
The standard spray box SB is provided with either two or four sections.

- SB3012 is 2 sections CB operating unit
- SB3014 is 4 sections CB operating unit
- SB3002 is 2 section solenoid operating unit
- SB3004 is 4 section solenoid operating unit

The control box allows opening and closing of each section individually, or all at one time. Pressure regulation button is standard on the control boxes, even when the operating unit has manual pressure regulation.



## Air kits

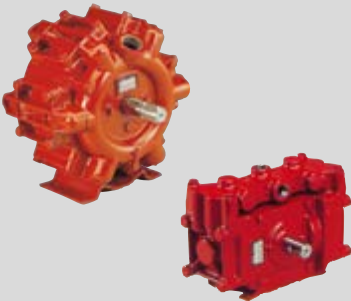


The vegetation sensors automatically activate the ON/OFF valve depending on where the vegetation is.



The standard spray boxes can additionally be equipped with a HC3050 monitor to visualize the spray task (HC3050 is also available as a spray rate control in vine sprayers). True rate controller is the 'all in one' control box, HC3150, that holds all buttons and rate controller in just the one cabinet. HC3150 can alternatively be a rate controller, set up with vegetation sensors, for automatically turning sections ON/OFF according to the target.

# Pump



HARDI diaphragm pumps need no introduction! From the very beginning, these pumps were exclusively designed and made for agricultural and horticultural sprayers and, for decades, have continued to uphold their world leading position. Every need is met. Look, for example, at: **Model 363** with 6 diaphragms that can deliver 140 to 195 l/min at pressures of up to 20 bars whilst the **Model 321** has 2 diaphragms and will deliver an output of 70 l/min at a pressure of 25 bars.

## Features

- Self-priming
- Able to run dry without damage
- Grease lubricated crankcase
- Chemical resistant diaphragms and valves
- Can be used to rotate clockwise or anti-clockwise
- Easy to service without special tools.

	Presion	Flow
Model	max. bar	l/min
363/7	20	140
363/10	15	194

## Wheels and axles

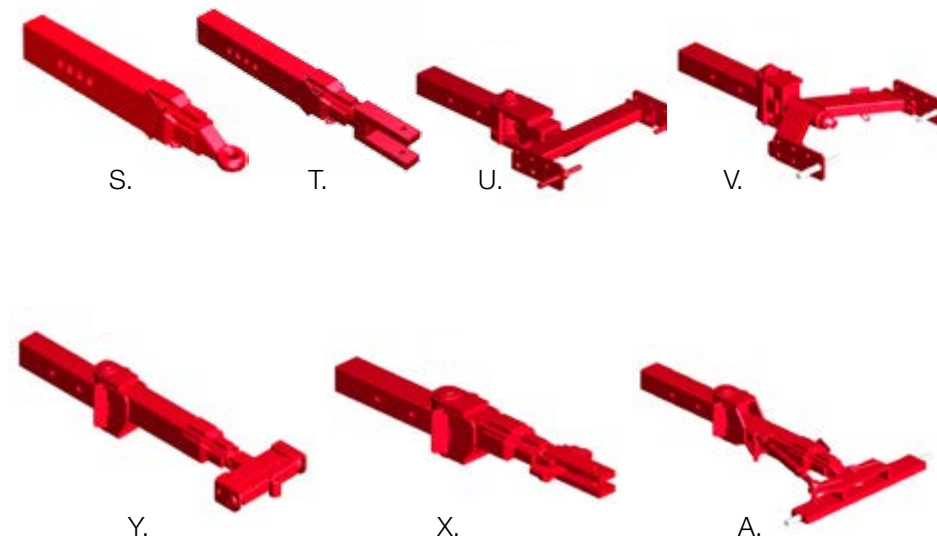
For every field condition and driving speed, various wheel dimensions, as well as tandem and boogie axles are offered, to provide for your most optimal solution in the field.

Curved axles to create clearance, straight to lower it, brakes for hilly condition and road transport.



## Drawbars

Your trailed orchard sprayers are offered with a numbers of different drawbar solutions, all according to the local habits and demands.

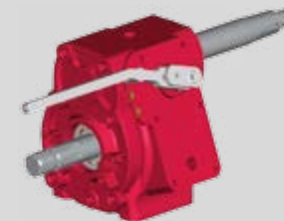


## Gear box



The HARDI heavy-duty gearbox stands up to the extreme conditions that orchard applications provoke, in very warm climate conditions as well as in severe terrain, where engine revolutions cannot maintain constant.

- Safety device to avoid unintended disengagement.
- Strong all-in-one body casing with simplified greasing needs.
- Easy access.



*HARDI HD gearbox with anti disengagement system on AG820 / 920*





#### BK control

The professional operating unit with pressure equalisation on each section, and HARDI-MATIC proportional valve.



#### The SA/2

Electrical solenoid operating unit, works fast and instantly on the two section valves. Manual pressure regulation.



#### CB/2 and CB/4

The professional electrical operating unit, each section valve has individual pressure equalisation, to secure constant pressure when one or more section valves are closed. Set the pressure you want from the Spray Box, by pressing the button for a moment.



#### Rinsing equipment

Good practise often demands rinsing equipment for professional and environmental friendly cleaning of the spray tank and liquid circuit. Our system goes further as it allows rinsing out of the spray line even with chemicals in the main tank.



#### Secure and fast liquid handling

All sprayers are equipped with the very best of valves to handle the liquid pressure and suction in the right order. Larger sprayers as Zatur, Jupiter and Mercury offer more options. A professional manifold system supports the daily work, quickly and safely handling of pressure and suction valves to load chemicals, water and rinsing system.



#### BS/2 control unit

The manual operating unit that can be placed next to the driver's position, where he can comfortably regulate pressure, and open / close left and right section.



#### The SV/2

Electrical solenoid, with ON/OFF section in the spray line.



#### M70 control unit

Easy and effective manual regulation system. The M70/2 control includes main ON/OFF valve, pressure gauge and distribution valve for 2 spray lines.



*Høje Taastrup,  
Denmark*

*Nørre Alslev,  
Denmark*

*Savigny,  
France*

*Beaurainville,  
France*

*Davenport,  
USA*

*Lleida,  
Spain*

*Adelaide,  
Australia*

## HARDI - The Sprayer

HARDI INTERNATIONAL A/S is an international group whose basic idea is to satisfy the user's requirements for quality products which ensure efficient, punctual and precise application of crop protection products. Our world-wide distribution and sales network comprise more than 100 countries where we are represented by importers, agents and sales subsidiaries. These are situated in Sweden, Norway, Denmark, the UK, France, Spain, North America, Germany and Australia.

Since 1957 HARDI has committed to the ever-increasing demands for efficient and precise plant protection. HARDI is the trendsetter within application of crop protection products. To achieve this position continued developments and innovation are essential. HARDI is committed to the long term future of plant protection.

## HARDI INTERNATIONAL A/S

Helgesvej Allé 38 • DK 2630 • Taastrup • Denmark  
E-Mail: [hardi@hardi-international.com](mailto:hardi@hardi-international.com) • [www.hardi-international.com](http://www.hardi-international.com)

## HARDI AUSTRALIA Pty. Ltd.

534-538 Cross Keys Road, Cavan • South Australia, 5094  
Phone: QLD(07)3375 3544, NSW(02)96274555,  
VIC(03)9310 2211, SA(08)8343 9933, WA(08)9353 2088  
Email: [info@hardi-aus.com](mailto:info@hardi-aus.com) • [www.hardi.com.au](http://www.hardi.com.au)



**The Sprayer**



## Superb surface treatment

The high-technology surface treatment contains 13 treatments, including an Oxsilan pre-treatment and powder coat painting of all major components.

Together with the Delta/Magni treatment of nuts, bolts and other items, we supply high corrosion protection of our products. The chassis, the boom and all other steel parts have been pre-treated with Oxsilan followed by a high-quality coating of powder paint.



## Testing procedures

Sprayers leaving HARDI INTERNATIONAL A/S are tested according to the strictest quality standards.

The staff of the assembly line is accredited to match the demands from both NSTS (National Sprayer Testing Scheme), UK and JKI (Julius Kühn Institut), Germany. This ensures that the highest quality sprayers are delivered to farmers.



Read more at [www.hardi-international.com](http://www.hardi-international.com)



HARDI reserves the right to change the specifications without notice.  
Illustrations shown may include optional extras and accessories.

